



**plusnet** *User Guide*  
*Version 1.0*

# Table of Contents

<b>1</b>	<b>ANALYTICS</b>	<b>1-4</b>
1.1	OVERVIEW	1-4
1.2	GETTING STARTED	1-4
1.3	MAIN MENU	1-5
<b>2</b>	<b>STATISTICS</b>	<b>2-6</b>
2.1	WEBSITE USAGE	2-6
2.1.1	Visits per page	2-7
2.1.2	Visits per area	2-8
2.1.3	PIs per levels	2-9
2.1.4	Downloads	2-9
2.1.5	Events	2-9
2.1.6	Duration per page	2-9
2.1.7	Duration per visit	2-10
2.1.8	Duration per PI	2-11
2.1.9	Clickpaths in/out	2-12
2.1.10	Clickpaths incoming	2-14
2.1.11	Clickpaths outgoing	2-14
2.1.12	Entry pages	2-15
2.1.13	Exit pages	2-16
2.1.14	IVW Analysis	2-17
2.1.15	Visitor Engagement	2-17
2.2	VISITORS	2-20
2.2.1	Page impression	2-20
2.2.2	Visit Overview	2-21
2.2.3	Unique visitors	2-22
2.2.4	Bounce visits	2-23
2.2.5	Visitor Details	2-24
2.2.6	Returning visitors	2-25
2.2.7	PIs to average	2-26
2.2.8	Visits to average	2-27
2.3	ORIGIN	2-28
2.3.1	Referrers	2-28
2.3.2	Origin Overview	2-29
2.3.3	Search Engines	2-30
2.3.4	Search Phrases	2-31
2.3.5	Search Words	2-32
2.3.6	Geo-Overlay	2-33
2.3.7	Visits by country	2-34
2.3.8	Visits by region	2-35
2.3.9	2.3.9. Visits by city	2-36
2.3.10	Visits by domain	2-36
2.3.11	Top Providers	2-36
2.4	TECHNOLOGY	2-37
2.4.1	Browsers	2-37
2.4.2	Operating systems	2-38
2.4.3	Screen resolutions	2-39
2.4.4	Connection speeds	2-40
2.4.5	Flash	2-41
2.4.6	JavaScript	2-41
2.4.7	Plugins	2-42
2.4.8	Colors/color depth	2-43
2.4.9	Java	2-44
2.5	MOBILE	2-45
2.5.1	Mobile Visitors	2-45
2.5.2	Mobile Browser	2-46
2.5.3	Mobile Operating Systems	2-47

---

2.5.4	<i>Mobile Devices</i> .....	2-48
2.6	E-COMMERCE .....	2-49
2.6.1	<i>Products</i> .....	2-49
2.6.1	<i>Sales</i> .....	2-50
2.6.2	<i>Orders</i> .....	2-51
<b>3</b>	<b>MANAGEMENT</b> .....	<b>3-52</b>
3.1	MANAGEMENT OVERVIEW .....	3-52
3.1.1	<i>Dashboard</i> .....	3-52
3.1.2	<i>KPI's</i> .....	3-54
3.2	CAMPAIGNS .....	3-54
3.2.1	<i>Campaigns overview</i> .....	3-54
3.2.2	<i>Top Campaigns</i> .....	3-55
3.2.3	<i>Top Milestones</i> .....	3-55
3.2.4	<i>Sales per Campaign</i> .....	3-55
3.2.5	<i>Conversion</i> .....	3-55
3.3	REPORTS .....	3-56
3.3.1	<i>Report Overview</i> .....	3-56
3.3.2	<i>Create new reports</i> .....	3-57
<b>4</b>	<b>ADVANCED</b> .....	<b>4-58</b>
4.1	STATISTIC COMPARISON .....	4-58
4.1.1	<i>Comparison</i> .....	4-58
<b>5</b>	<b>SUPPORT</b> .....	<b>5-59</b>



# 1 Analytics

**Analytics 1.0** provides a complete view of your website analytics and usage.

## 1.1 Overview

Analytics allows you to optimize the online presence for your website. Using the Analytics application, you can view your website statistics, manage account information, print reports, and specify how the application should gather information. The statistical analytics provides information about visitors to your website. For example, how they found your website, the pages they visit, the length of time spent on each page, and the activity for each page.

## 1.2 Getting Started

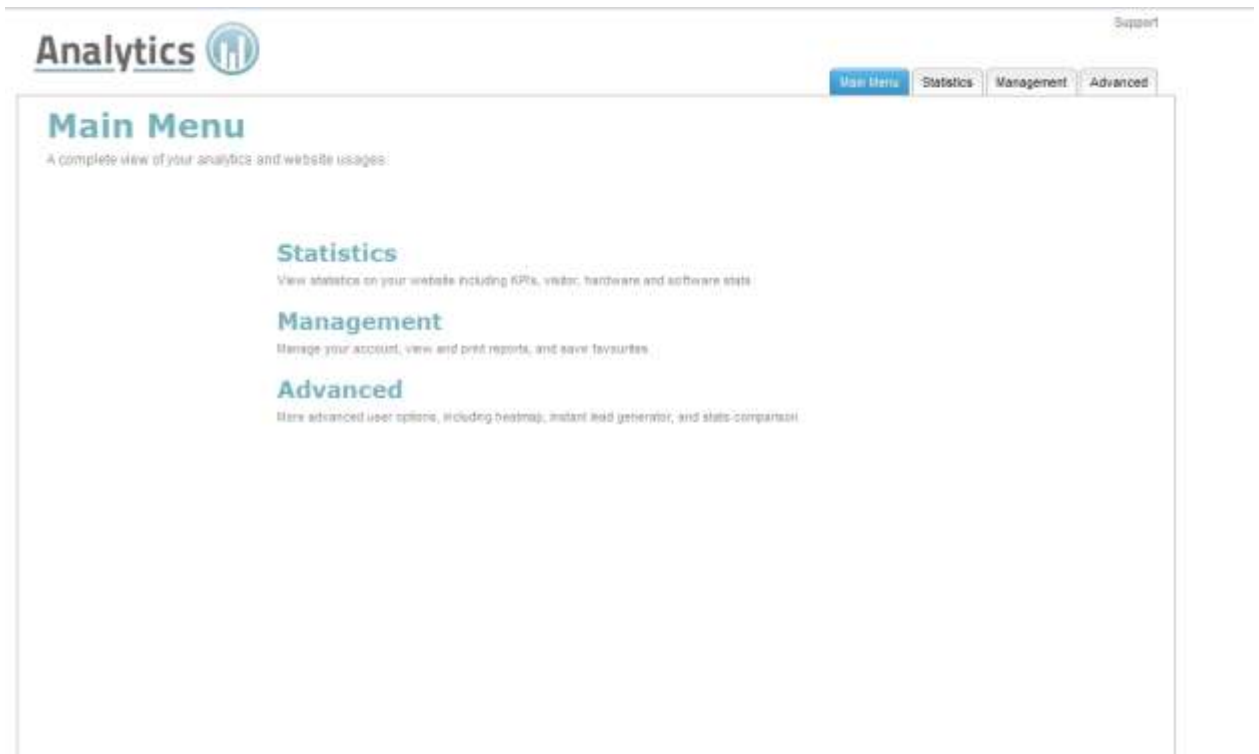
The Analytics application is available as part of the WebsiteOS Statistics tool-set.

To launch Analytics 1.0:

1. In the WebsiteOS dialog, click **Statistics**.
2. In the Statistics dialog, click **Analytics**.  
The Welcome Analytics page is displayed.



3. Click **Start**.  
The Analytics Main Menu page opens in a new window.



## 1.3 Main Menu

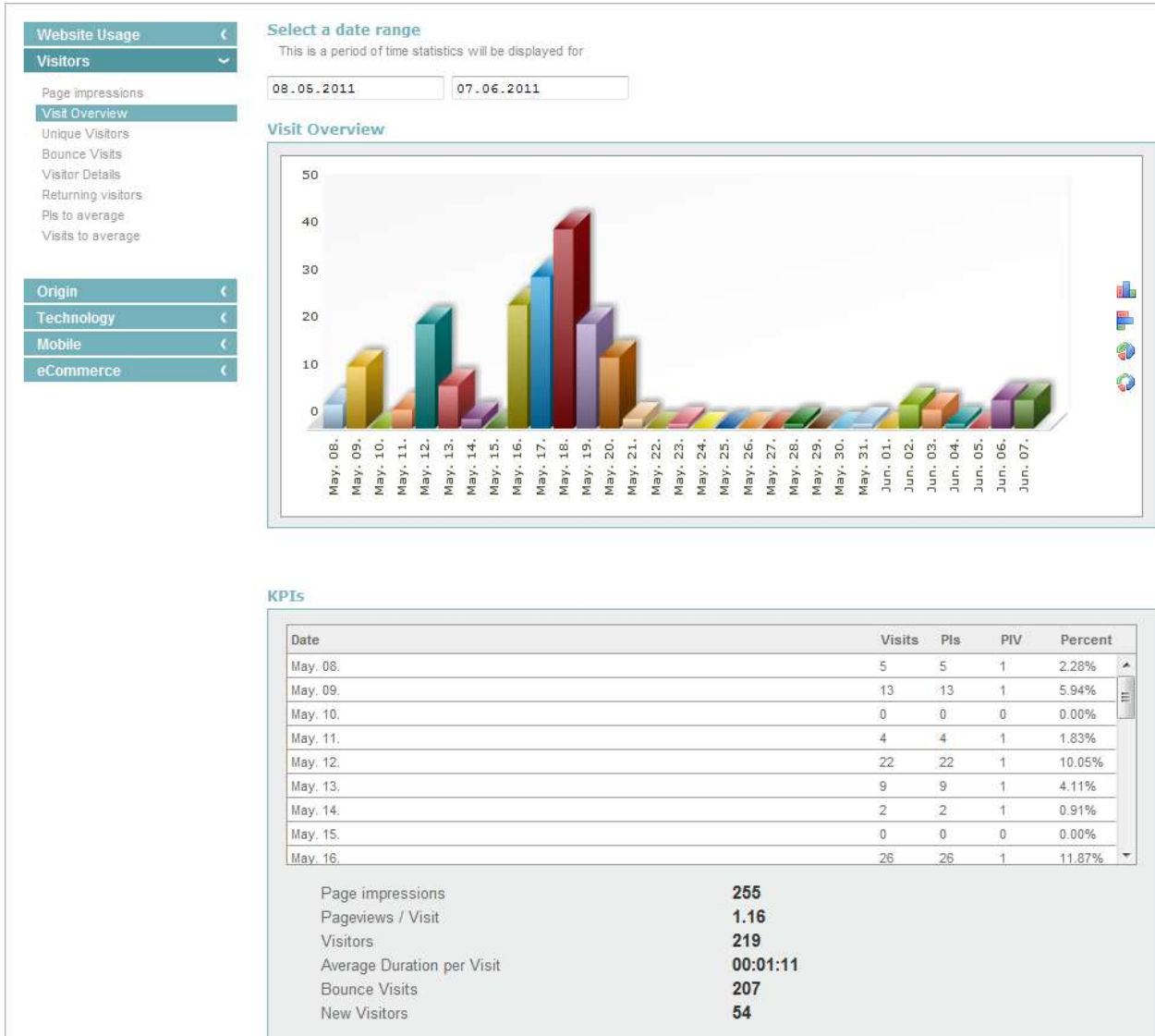
The Main Menu consists of the following sections:

- Statistics
- Management
- Advanced

# 2 Statistics

This section allows you to view statistics about your website, including KPI's, visitor, hardware and software statistics.

Clicking the Statistics link from the main menu opens the Visit Overview page. The date range displayed defaults to the past 30 days.



## 2.1 Website Usage

Website Usage statistics provide information about visitor behavior for your website. Information such as, how visitors arrived to your site, the individual pages they visited, activities they performed on each page, and how they exited your site are available.

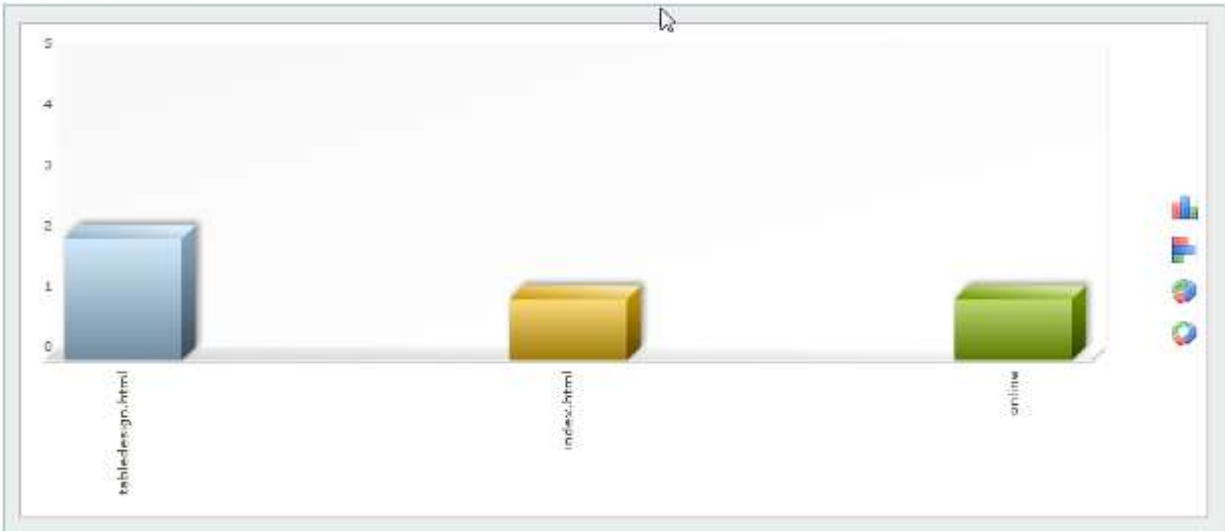
Figure 1: Website Usage Drop-down

- Website Usage
- Visits per page
- Visits per area
- PIs per levels
- Downloads
- Events
- Duration per page
- Duration per visit
- Duration per PI
- Clickpaths in/out
- Clickpaths incoming
- Clickpaths outgoing
- Entry pages
- Exit pages
- IVW Analysis
- Visitor Engagement

### 2.1.1 Visits per page

Visits per page, provides an overview of the number of page impressions and visits for individual pages within your site. The Visits per page section displays the information graphically in table, pie chart, or ring format.

Visits per page



The KPIs section provides visitor information that reflects overall website usage, as well as a page-specific breakdown. The page-specific information includes the number of visits, PIs and overall percent per page.

**KPIs**

Page	Visits	PIs	Percent
index.html	145	160	62.77%
menus.html	19	21	8.23%
gallery.html	19	20	8.23%
services.html	19	19	8.23%
about.html	14	14	6.06%
contact.html	13	14	5.63%
index.htm	2	2	0.87%

Page impressions	<b>250</b>
Pageviews / Visit	<b>1.15</b>
Visitors	<b>218</b>
Average Duration per Visit	<b>00:00:18</b>
Bounce Visits	<b>207</b>
New Visitors	<b>53</b>

To change the date range:

- Select the start and end date from the pop-up calendar.

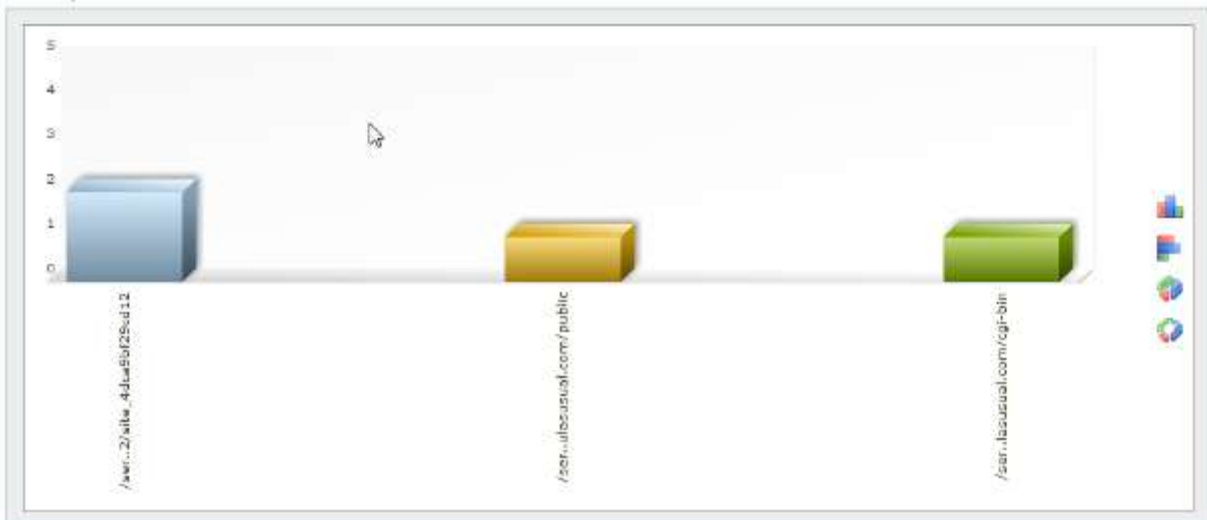
To view the website page:

- In the Page section, click page link.

### 2.1.2 Visits per area

This page provides an overview of the number of page impressions and visits for specific areas of an individual page. The Visits per area section displays the information graphically in table, pie chart, or ring format.

**Visits per area**



The KPIs section provides visitor information that reflects overall website usage, as well as an area-specific breakdown. The area-specific information includes the number of visits, PIs and overall percent per page.

To change the date range:

- Select the start and end date from the pop-up calendar.

To view the website page:

- In the Area section, click page link.



## 2.1.3 PIs per levels

This page provides an overview of the PIs (page impressions) for the selected time period using the available **page names** and sub-divides these into **levels**. The level sub-division is carried out using the set **separator in the page name**. Detailed information on how the page names can be defined is found under 'Integrating the pixel-code'.

The hierarchical levels are displayed using a tree view. The percentages are displayed absolute to the highest level and relative to the next higher level. If a link to the page is available, clicking this page element will take the user to the stored page.

### PIs per levels

View a complete overview of the page impressions for the selected time period.

#### Select a date range

This is a period of time statistics will be displayed for



#### PIs per levels

## 2.1.4 Downloads

This page provides an overview of how often certain documents have been downloaded.

To change the date range:

- Select the start and end date from the pop-up calendar.

The table below shows the Key Performance Indicators (KPIs) i.e. the general information on visits per page.

## 2.1.5 Events

This page provides an overview of the number of triggered events for the selected time period and sub-divides these into **levels**. The percentages are displayed absolute to the highest level and relative to the next higher level.

## 2.1.6 Duration per page

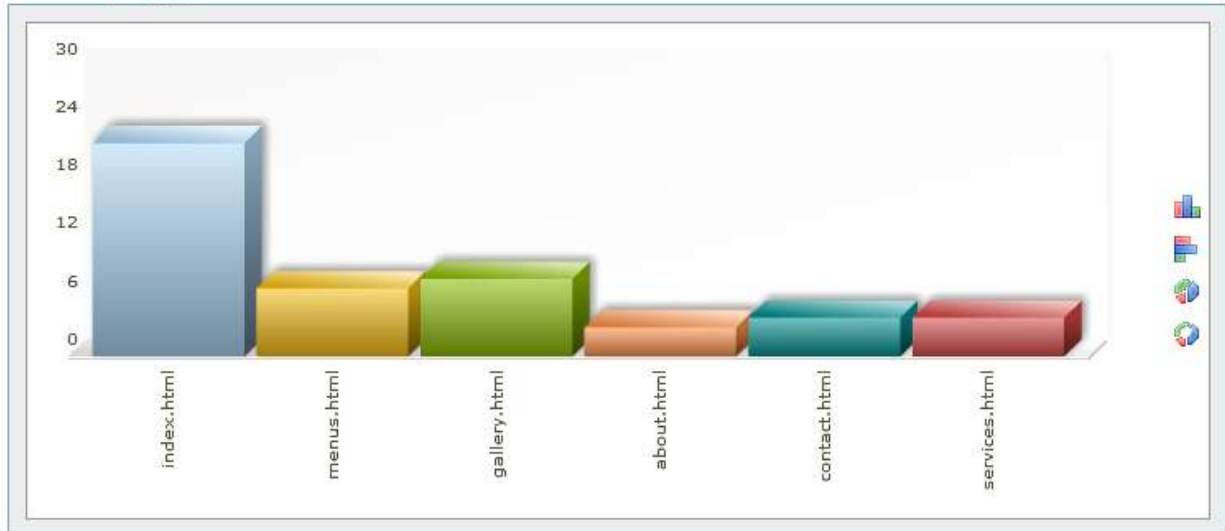
This page provides an overview of the time spent (in minutes) on each page for the selected period.

The Duration per page section graphically displays the time per page in a table, pie chart or ring format.

To change how the information is displayed:

- Click the chart type icon.

Duration per page



The KPIs section provides general information about visitor behaviour and detailed information about the number of visits, total time spent on each page, and the overall percent based on all pages.

KPIs

Page	Visits	TotalTime	Percent
index.html	22	37.01	66.20%
menus.html	7	12.27	22.27%
gallery.html	8	03.13	5.75%
about.html	3	01.36	2.86%
contact.html	4	01.16	2.27%
services.html	4	00.22	0.66%

Page impressions	<b>1215</b>
Pageviews / Visit	<b>1.07</b>
Visitors	<b>1136</b>
Average Duration per Visit	<b>00:01:10</b>
Bounce Visits	<b>1112</b>
New Visitors	<b>211</b>

To change the date range:

- Select the start and end date from the pop-up calendar.

To view the website page:

- In the Page section, click page link.

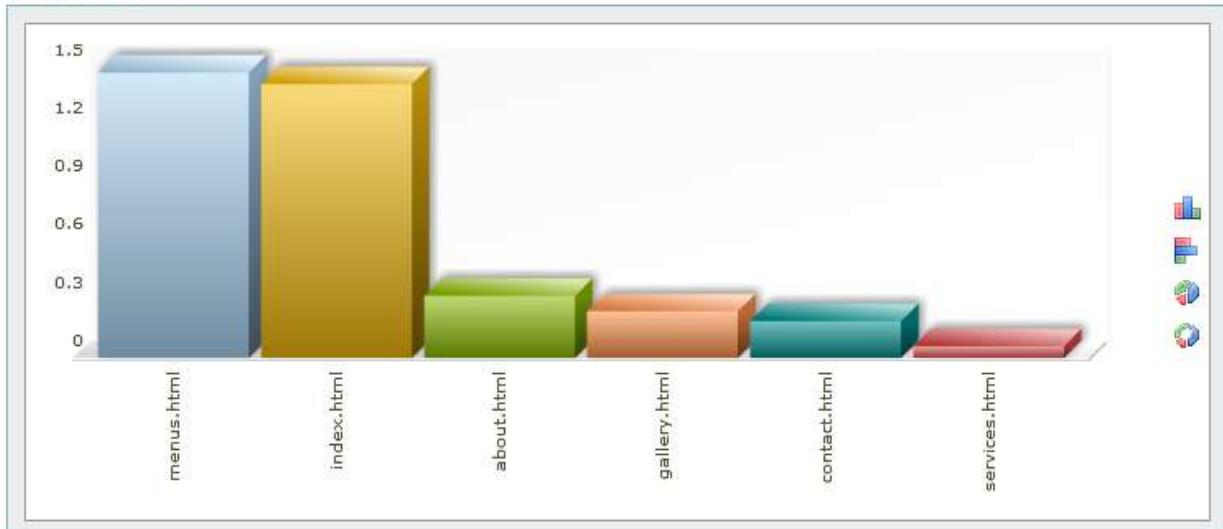
### 2.1.7 Duration per visit

This page provides an overview of the average time spent on each page per visit. The Duration per visit section graphically displays the time per visit for each page in a table, pie chart or ring format.

To change how the information is displayed:

- Click the chart type icon.

## Duration per visit



The KPIs section provides general information about visitor behaviour and detailed information about the number of visits, total time spent on each page per visit, and the overall percent based on all pages.

## KPIs

Page	Visits	Duration/Visit	Percent
menus.html	7	01.47	14.58%
index.html	22	01.41	45.83%
about.html	3	00.32	6.25%
gallery.html	8	00.24	16.67%
contact.html	4	00.19	8.33%
services.html	4	00.06	8.33%

Page impressions	<b>1215</b>
Pageviews / Visit	<b>1.07</b>
Visitors	<b>1136</b>
Average Duration per Visit	<b>00:01:10</b>
Bounce Visits	<b>1112</b>
New Visitors	<b>211</b>

To change the date range:

- Select the start and end date from the pop-up calendar.

To view the website page:

- In the Page section, click page link.

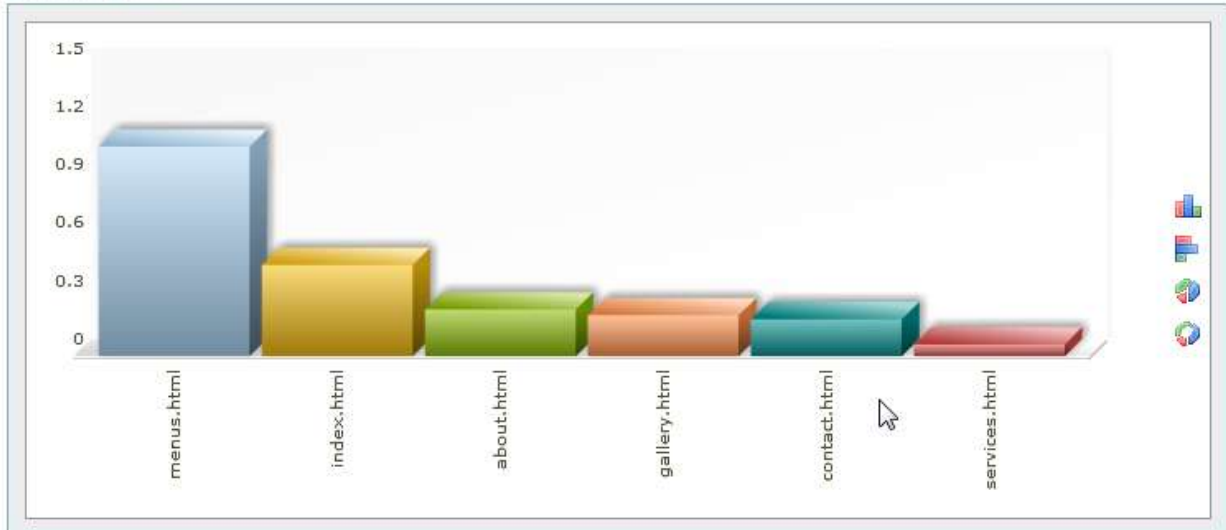
## 2.1.8 Duration per PI

This page provides an overview of the average time spent on a page per PI (page impression) for the selected period. The Duration per PI section graphically displays the time per visit for each page in a table, pie chart or ring format.

To change how the information is displayed:

- Click the chart type icon.

Duration per PI



The KPIs section provides general information about visitor behaviour and detailed information about the number of PIs, total time spent on each page per PI, and the overall percent based on the combined number of pages in your website.

KPIs

Page	Pis	Duration/Pi	Percent
menus.html	11	01.08	13.92%
index.html	47	00.47	59.49%
about.html	4	00.24	5.06%
gallery.html	9	00.21	11.39%
contact.html	4	00.19	5.06%
services.html	4	00.06	5.06%

Page impressions	<b>1215</b>
Pageviews / Visit	<b>1.07</b>
Visitors	<b>1136</b>
Average Duration per Visit	<b>00:01:10</b>
Bounce Visits	<b>1112</b>
New Visitors	<b>211</b>

To change the date range:

- Select the start and end date from the pop-up calendar.

To view the website page:

- In the Page section, click page link.

## 2.1.9 Clickpaths in/out

This page provides an overview of the visitor clickpaths –both in and out. These paths describe the specific click patterns visitors use to navigate through a website. The information is presented in the form of a diagram. The Direct Views (right-hand side) list, displays the clickpaths that lead the visitor to the specified page. The Direct Outgoing (left-hand side) list, displays the pages that the visitor jumped to from the specified page. The figures on the arrows indicate the number of visits that have entered or exited via this clickpath.

**Selection**

index.html

**Clickpaths in/out**

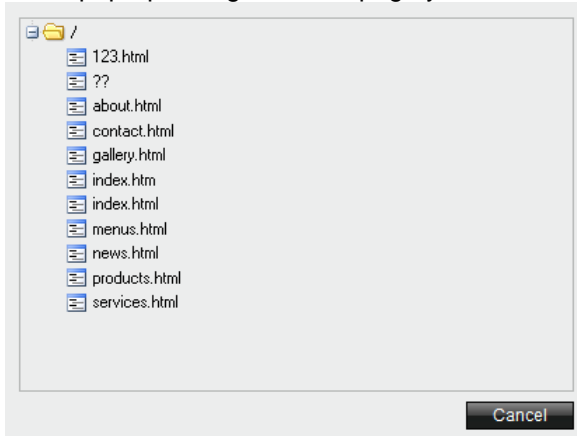


To change the date range:

- Select the start and end date from the pop-up calendar.

To display a different page:

1. Click anywhere in the Selection field.
2. In the pop-up dialog, click the page you want to view.



To view the visitor details for a clickpath pattern:

- Click the number associated with the incoming or outgoing clickpath.

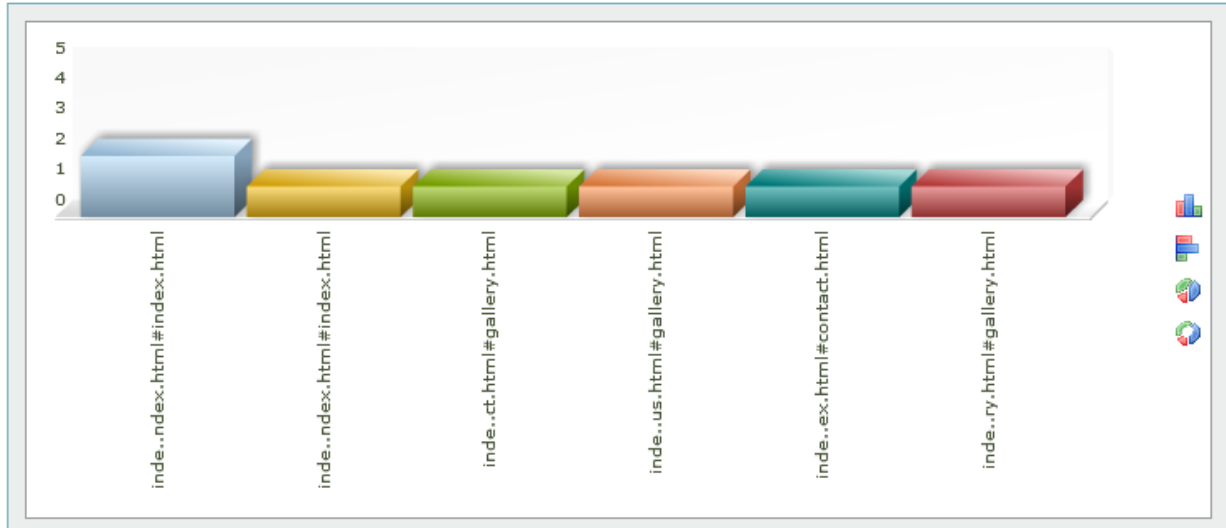
## 2.1.10 Clickpaths incoming

This page provides an overview of incoming clickpaths. Incoming clickpaths provide information about how often each page is visited from another location. The Clickpaths incoming section graphically displays the time per visit for each page in a table, pie chart or ring format.

To change how the information is displayed:

- Click the chart type icon.

### Clickpaths incoming



The KPIs section provides general information about visitor behaviour and detailed information about the number of visits per page, and the overall percent based on the combined number of pages in your website.

### KPIs

Page	Visits	Percent
index.html#index.html#menus.html#index.html#index.html	2	28.57%
index.html#index.html#index.html#index.html#index.html	1	14.29%
index.html#index.html#index.html#contact.html#gallery.html	1	14.29%
index.html#index.html#services.html#menus.html#gallery.html	1	14.29%
index.html#contact.html#index.html#index.html#contact.html	1	14.29%
index.html#about.html#services.html#gallery.html#gallery.html	1	14.29%

Page impressions	<b>289</b>
Pageviews / Visit	<b>1.40</b>
Visitors	<b>206</b>
Average Duration per Visit	<b>00:01:19</b>
Bounce Visits	<b>182</b>
New Visitors	<b>76</b>

## 2.1.11 Clickpaths outgoing

This page provides an overview of outgoing clickpaths. These are specific click patterns the visitors use to navigate through the website before leaving. The information is presented in the form of a diagram or a table.

## 2.1.12 Entry pages

This page provides an overview of which page a visitor used to enter the website and how long they stayed. Specifically, it shows which page, was most frequently, the **first** one used by visitors to the website. The entry pages section graphically displays the time per page in a table, pie chart or ring format.

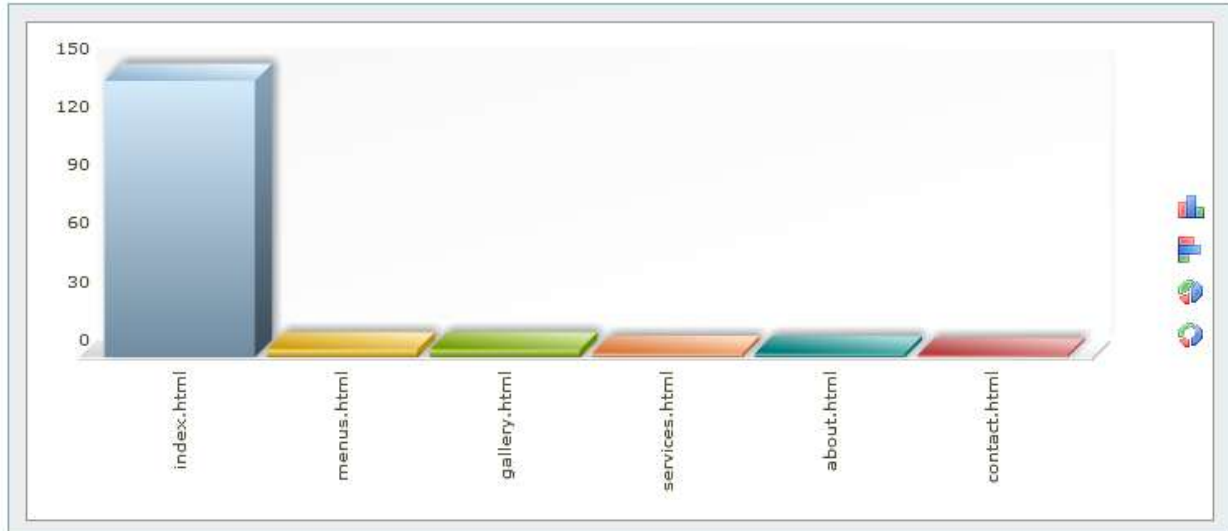
To change the date range:

- Select the start and end date from the pop-up calendar.

To change how the information is displayed:

- Click the chart type icon.

### Entry pages



The KPIs section provides general information about visitor behaviour and detailed information about the average duration per page, the number of visits per page, and the overall percent based on the combined number of pages in your website.

### KPIs

Page	Average Duration per Visit in	Visits	Percent
index.html	0:22	142	91.61%
menus.html	0:06	4	2.58%
gallery.html	0:09	4	2.58%
services.html	--	2	1.29%
about.html	--	2	1.29%
contact.html	--	1	0.65%

Page impressions	<b>316</b>
Pageviews / Visit	<b>2.04</b>
Visitors	<b>155</b>
Average Duration per Visit	<b>00:02:10</b>
Bounce Visits	<b>105</b>
New Visitors	<b>137</b>

## 2.1.13 Exit pages

This page provides an overview of the pages a visitor used to exit the website and how long they stayed. Specifically, it shows which page, was most frequently, the **last** one used by visitors before they left the website. The Exit pages section graphically displays the time per page in a table, pie chart or ring format.

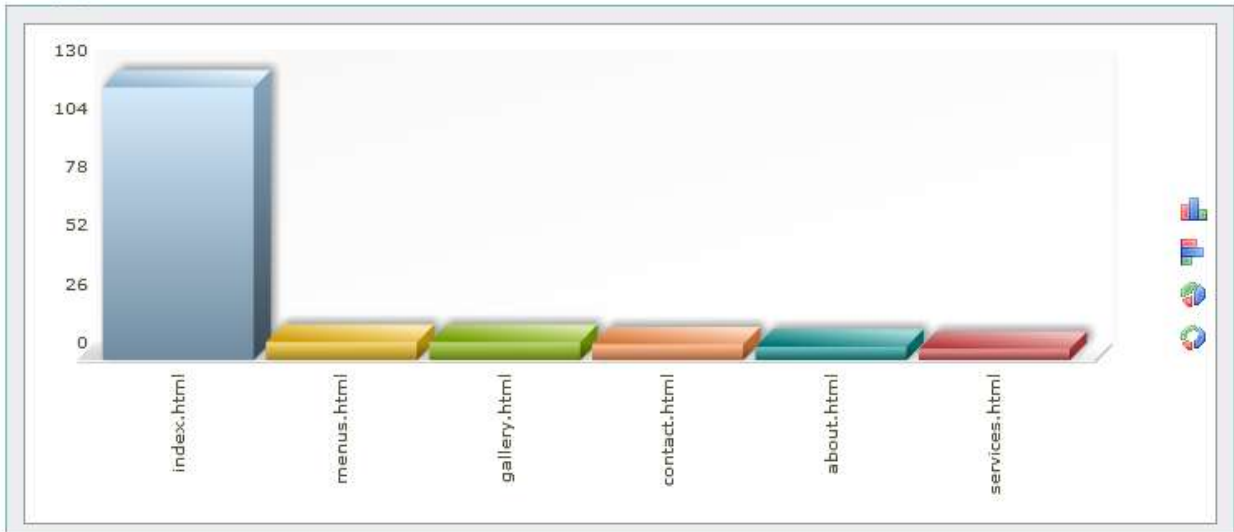
To change the date range:

- Select the start and end date from the pop-up calendar.

To change how the information is displayed:

- Click the chart type icon.

### Exit pages



The KPIs section provides general information about visitor behaviour and detailed information about the average duration per page, the number of visits per page, and the overall percent based on the combined number of pages in your website.

### KPIs

Page	Average Duration per Visit in	Visits	Percent
index.html	--	121	78.06%
menus.html	--	8	5.16%
gallery.html	--	8	5.16%
contact.html	--	7	4.52%
about.html	--	6	3.87%
services.html	--	5	3.23%

Page impressions	<b>316</b>
Pageviews / Visit	<b>2.04</b>
Visitors	<b>155</b>
Average Duration per Visit	<b>00:02:10</b>
Bounce Visits	<b>105</b>
New Visitors	<b>137</b>



## 2.1.14 IVW Analysis

These statistics provide an overview of the data passed in the **'wm\_ivw'** parameter. The time period for the overview can be selected. The information is presented in the form of a diagram or a table.

To change the date range:

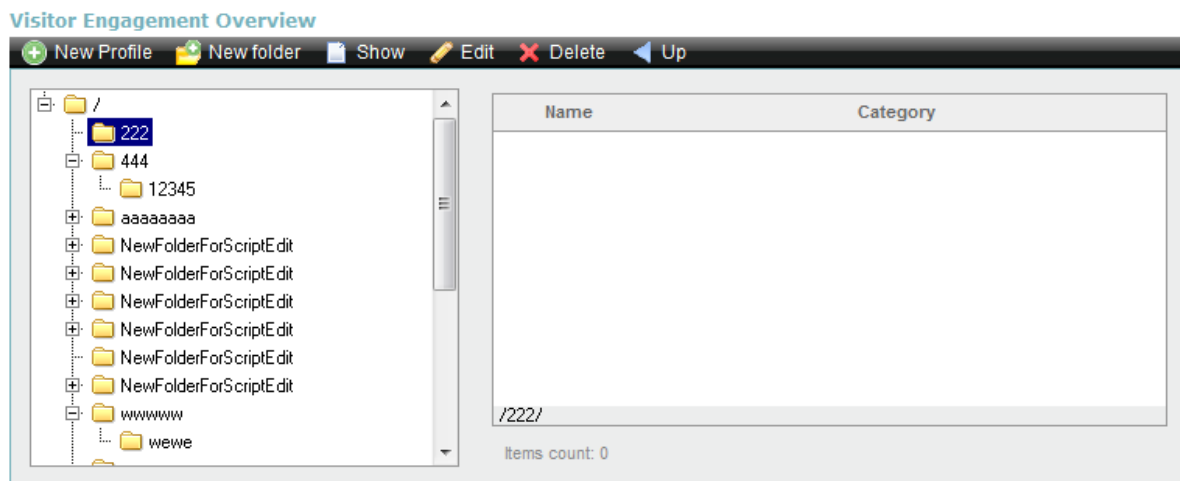
- Select the start and end date from the pop-up calendar.

The table below shows the Key Performance Indicators (KPIs) i.e. the general information on visits per page.

## 2.1.15 Visitor Engagement

The Visitor Engagement page allows you to assign virtual values, which measure the intensity of user interaction.

The Visitor Engagement Overview section displays a dialog containing two panels. The left-hand panel lists all available profiles in a tree view. You can select a profile from the left-hand panel to display the details in the right-hand panel. Within this section, you can also view the detailed analysis for an existing profile, edit existing profile criteria, or create a new profile.



To view an existing profile:

1. From the left-hand panel, highlight a profile.
2. Click the “Show” button.  
The Visitor Engagement page updates with the details for that profile.

To edit an existing profile:

1. From the left-hand panel, highlight a profile.
2. Click the “Edit” button.  
The Visitor Engagement page updates with the profile details.
3. Edit the required fields.  
For detailed configuration information, see [Configuring the Analysis Details](#).
4. Click “Save”.

To create a new profile:

1. In the Visitor Engagement Overview section, click “New Profile”.
2. In the Visitor Engagement section.
3. Edit the required fields.  
For detailed configuration information, see [Configuring the Analysis Details](#).

4. Click "Save".

## Viewing the Visitor Engagement Analysis

The Analysis of Visitor Engagement page displays the information specified for that particular profile. The settings defined in the profile, such as the configured weightings for particular behavior patterns of visitors, are reflected in the 'Visitor Engagement' column. The KPIs displayed for the analysis likewise correspond to those selected in the profile.

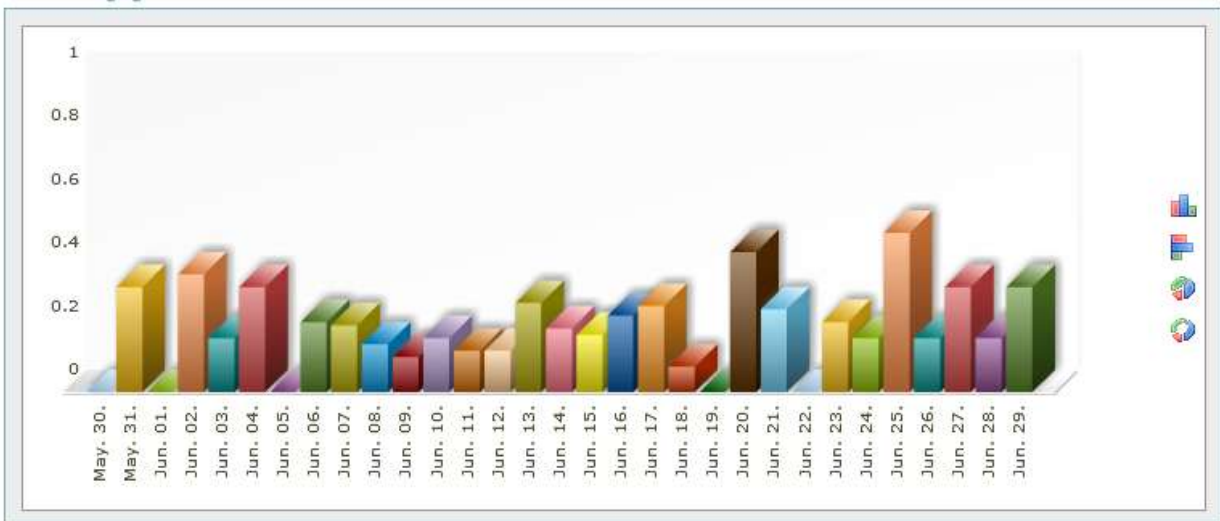
# Visitor Engagement

Page displays the specific profile. The further defined KPIs and the visitor engagement value will be displayed according to the defined settings.

### Select a date range

This is a period of time statistics will be displayed for

### Visitor Engagement



### KPIs

Date	Visitor Engagement	Unique Visitors	Visitors	Visits/UV	PIs/UV
May. 30.	0	0	0	0	0
May. 31.	0.33	1	1	1	4
Jun. 01.	0	0	0	0	0
Jun. 02.	0.37	5	5	1	4.2
Jun. 03.	0.17	4	4	1	1
Jun. 04.	0.33	1	1	1	5
Jun. 05.	0	0	0	0	0
Jun. 06.	0.22	6	6	1	1.67
Jun. 07.	0.21	9	12	1.33	3.56
Pageviews / Visit		<b>2.04</b>			
Bounce Visits		<b>105</b>			

## Configuring the Analysis Details

Configuring profile details allows you to specify what criteria is used during analysis. The profile configuration contains general information, such as the profile name and description.

### Visitor Engagement

ID:	<input type="text"/>
Name:	<input type="text"/>
Category:	<input type="text" value="B2B-Shop"/>
Description:	<input type="text"/>

### Visitor Engagement Factors

<input type="checkbox"/> Click Depth Index	Factor: <input type="text" value="1.0"/>	Pls>: <input type="text" value="1"/>	
<input checked="" type="checkbox"/> Recency Index	Factor: <input type="text" value="1.0"/>	Pls>: <input type="text" value="1"/>	Past weeks: <input type="text" value="1"/>
<input checked="" type="checkbox"/> Duration Index	Factor: <input type="text" value="1.0"/>	Minutes>: <input type="text" value="1"/>	
<input checked="" type="checkbox"/> Loyalty Index	Factor: <input type="text" value="1.0"/>	Returned>: <input type="text" value="1"/>	
<input checked="" type="checkbox"/> Brand Index	Factor: <input type="text" value="1.0"/>		
<input checked="" type="checkbox"/> Feedback Index	Factor: <input type="text" value="1.0"/>	Feedback: <input type="text"/>	
<input checked="" type="checkbox"/> Interaction Index	Factor: <input type="text" value="1.0"/>	Action: <input type="text"/>	
<input checked="" type="checkbox"/> WMScore	Factor: <input type="text" value="1.0"/>		

### KPIs

<input type="checkbox"/> Page impressions	<input type="checkbox"/> New Visitors
<input type="checkbox"/> Average Duration per Visit	<input type="checkbox"/> Pageviews / Visit
<input type="checkbox"/> Total visits	<input type="checkbox"/> Bounce Visits

When creating a profile, you also assign weighted values to particular visitor behavior patterns. These weighted values are referred to as factors. The analysis category allows you to choose from one of the default options. Selecting a default category populates the Factors fields according that category. You can also select the KPIs' that you want displayed for the statistics.

The following table explains the values associated with each factor.

Factor	Description
Click Depth Index	All visits with more than the defined page impressions are counted, divided by the total number of visits and then multiplied by the defined factor.
Recency Index	All visits with more than the defined page impressions that led to return visits within the defined time period are counted. The end value of this time period is always the end time of the current scale interval; to obtain the start value, the defined weeks are subtracted from the end time. The counted visits are divided by the total number of visits and multiplied by the defined factor.
Duration Index	All visits with more than the defined visit time are divided by the total number of visits and then multiplied by the defined factor.
Loyalty Index	All visits that led to more frequent return visits than defined are divided by the total number of visits and multiplied by the defined factor.
Brand Index	All visits that landed directly on the website or through a search engine are counted, divided by the total number of visits and multiplied by the defined factor.
Feedback Index	All visits that visited the defined milestone are counted, divided by the total number of visits and multiplied by the defined factor.
Interaction Index	All visitors that visited the defined milestone are counted, divided by the total number of visits and multiplied by the defined factor.
WMScore	The 'wm_score' value is totalled for the selected time period and multiplied by the defined factor. The value for 'wm_score' is set in the pixel-code and is stored for the respective click.

## 2.2 Visitors

The statistics under this option provide information about the origin and behavior of visitors, along with an overview of the last visitors to the website.

### 2.2.1 Page impression

This page provides an overview of the number of **page impressions** for a specific period. The analysis is displayed over time. The Page impression section graphically displays the information in a table, pie chart or ring format.

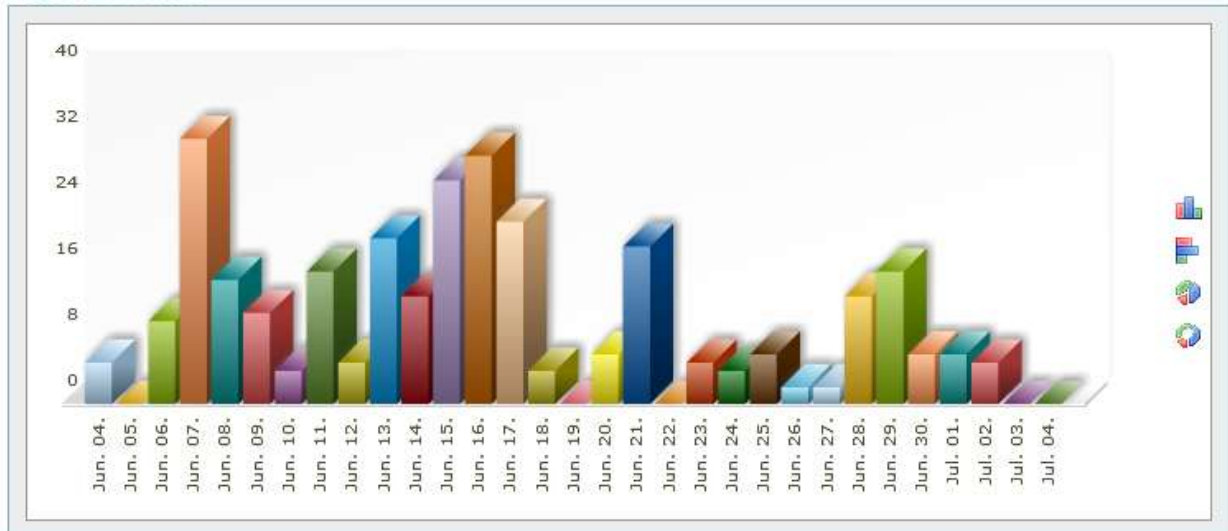
To change the date range:

- Select the start and end date from the pop-up calendar.

To change how the information is displayed:

- Click the chart type icon.

Page impressions



The table below shows the Key Performance Indicators (KPIs) i.e. the general information per page.

KPIs

Date	PIs	Visits	PIV	Percent
Jun. 04.	5	1	5	0.66%
Jun. 05.	0	0	0	0.00%
Jun. 06.	10	6	1.67	3.95%
Jun. 07.	32	12	2.67	7.89%
Jun. 08.	15	9	1.67	5.92%
Jun. 09.	11	11	1	7.24%
Jun. 10.	4	4	1	2.63%
Jun. 11.	16	5	3.2	3.29%
Jun. 12.	5	4	1.25	2.63%
Page impressions	<b>304</b>			
Pageviews / Visit	<b>2</b>			
Visitors	<b>152</b>			
Average Duration per Visit	<b>00:02:16</b>			
Bounce Visits	<b>104</b>			
New Visitors	<b>133</b>			

## 2.2.2 Visit Overview

This page provides an overview of the number of visitors to the website per-day, within a specific period. If the time frame spans more than 30-day period, the results are displayed on per-month basis. The analysis is displayed over time. The Visit overview section graphically displays the information in a table, pie chart or ring format.

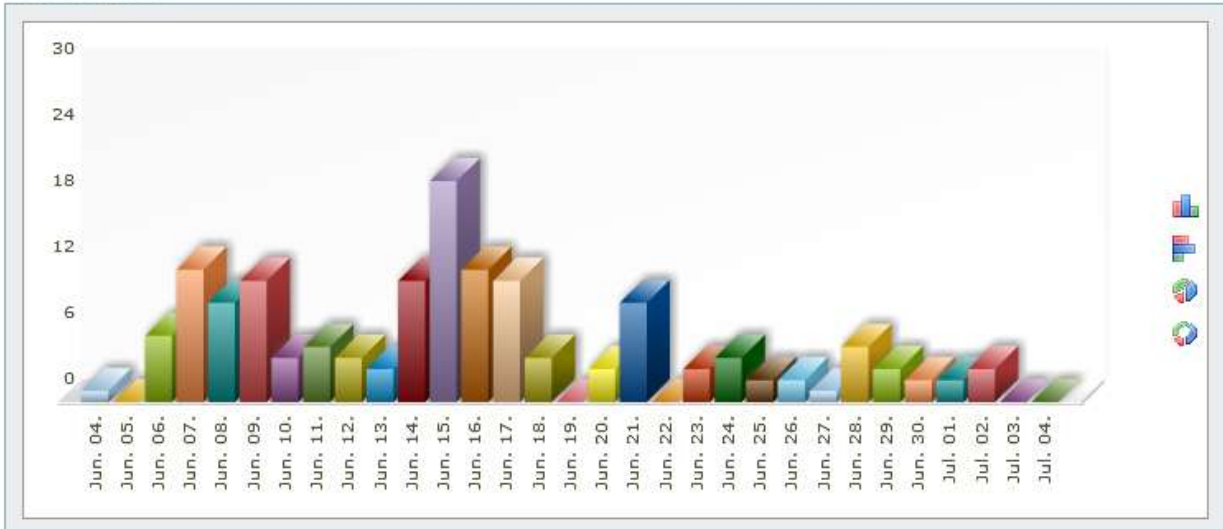
To change the date range:

- Select the start and end date from the pop-up calendar.

To change how the information is displayed:

- Click the chart type icon.

Visit Overview



The table below shows the Key Performance Indicators (KPIs) i.e. the general information per page.

KPIs

Date	Visits	Pls	PIV	Percent
Jun. 04.	1	5	5	0.66%
Jun. 05.	0	0	0	0.00%
Jun. 06.	6	10	1.67	3.95%
Jun. 07.	12	32	2.67	7.89%
Jun. 08.	9	15	1.67	5.92%
Jun. 09.	11	11	1	7.24%
Jun. 10.	4	4	1	2.63%
Jun. 11.	5	16	3.2	3.29%
Jun. 12.	4	5	1.25	2.63%

Page impressions	<b>304</b>
Pageviews / Visit	<b>2</b>
Visitors	<b>152</b>
Average Duration per Visit	<b>00:02:16</b>
Bounce Visits	<b>104</b>
New Visitors	<b>133</b>

### 2.2.3 Unique visitors

These statistics provide an overview of the individual visitors to the site. Unlike with the '**Total Visits**' analysis, how often a visitor has visited a site is irrelevant here, as only the visitors are counted. If a visitor has visited a site three times in the selected time period, this counts as one unique visit. The unique visitors always get differentiated per scale unit (days, weeks, etc.); only for the total value the complete period is used to differentiate the unique visitors.

If the selected time frame spans more than 30 days, the information is displayed on a per-month basis. The Unique visitors section graphically displays the information in a table, pie chart or ring format.

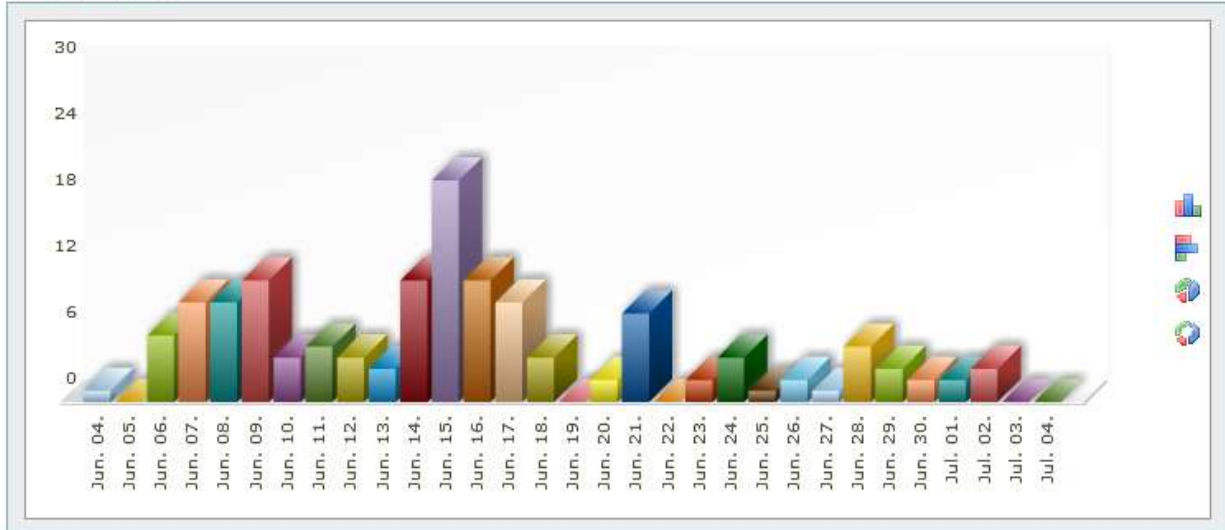
To change the date range:

- Select the start and end date from the pop-up calendar.

To change how the information is displayed:

- Click the chart type icon.

Unique Visitors



Unique visitors are visitors who can be uniquely identified. It is therefore possible to assign several visits (sessions) to a unique visitor.

**Note:** Unique visitors are identified via a cookie. Visitors who do not allow cookies are not included in this analysis.

The KPIs table displays the general information on visits per page.

KPIs

Date	Unique	Visits	Visits/UVPIs	PIs/UV	Percent	
Jun. 04.	1	1	1	5	0.70%	
Jun. 05.	0	0	0	0	0.00%	
Jun. 06.	6	6	1	10	1.67	4.23%
Jun. 07.	9	12	1.33	32	3.56	6.34%
Jun. 08.	9	9	1	15	1.67	6.34%
Jun. 09.	11	11	1	11	1	7.75%
Jun. 10.	4	4	1	4	1	2.82%
Jun. 11.	5	5	1	16	3.2	3.52%
Jun. 12.	4	4	1	5	1.25	2.82%

Page impressions	<b>304</b>
Pageviews / Visit	<b>2</b>
Visitors	<b>152</b>
Average Duration per Visit	<b>00:02:16</b>
Bounce Visits	<b>104</b>
New Visitors	<b>133</b>

## 2.2.4 Bounce visits

This page provides an overview of the number of bounced visits to the website within a specific period. The time period can be freely chosen. The Bounce visits section graphically displays the information in a table, pie chart or ring format.

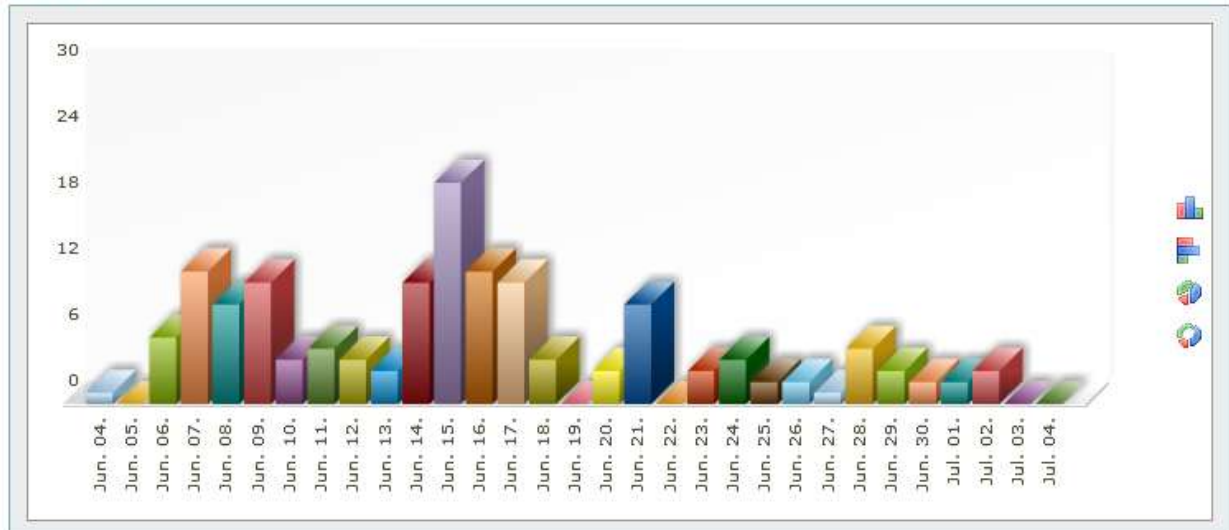
To change the date range:

- Select the start and end date from the pop-up calendar.

To change how the information is displayed:

- Click the chart type icon.

Bounce Visits



The table shows the Key Performance Indicators (KPIs) i.e. the general information on visits per page.

KPIs

Date	Bounce Rate	Visits	Bounced
2011 May.	99.49	396	394
2011 Jun.	67.31	156	105
2011 Jul.	60	5	3

Page impressions	<b>729</b>
Pageviews / Visit	<b>1.31</b>
Visitors	<b>557</b>
Average Duration per Visit	<b>00:02:03</b>
Bounce Visits	<b>502</b>
New Visitors	<b>196</b>

### 2.2.5 Visitor Details

This page provides an overview of the visitors who are currently viewing something, or who have viewed something in the past, on the website. The information is presented in tabular form and contains data about when the user visited the site, how many pages he/she viewed (**PI**), whether he/she visited the site



in the past, and who the user identity.

**KPIs**

Date	PIs	Domain	Search Phrases
02 Jul 2011, 22:19:46	3	xx	
02 Jul 2011, 22:19:00	1	xx	
02 Jul 2011, 22:19:00	1	xx	
01 Jul 2011, 22:53:50	5	xx	
01 Jul 2011, 22:52:47	1	xx	
30 Jun 2011, 15:55:14	4	xx	appitizers catering companies naples fl
30 Jun 2011, 12:05:26	2	xx	
29 Jun 2011, 11:45:17	7	xx	
29 Jun 2011, 11:41:03	7	xx	

Page impressions	<b>304</b>
Pageviews / Visit	<b>2</b>
Visitors	<b>152</b>
Average Duration per Visit	<b>00:02:16</b>
Bounce Visits	<b>104</b>
New Visitors	<b>133</b>

## 2.2.6 Returning visitors

These statistics provide an overview of how many times a visitor has returned to the website. The statistics are analysed and displayed according to the number of return visits. For example, 168 visitors have only visited the website once; whereas, 31 visitors have visited twice. The Returning visitors section graphically displays the information in a table, pie chart or ring format.

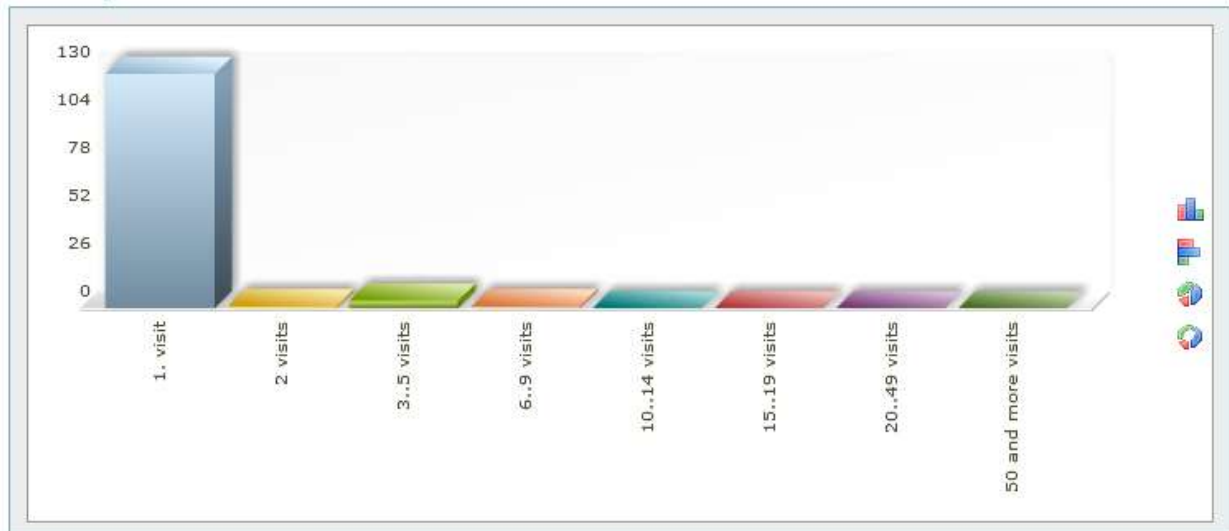
To change the date range:

- Select the start and end date from the pop-up calendar.

To change how the information is displayed:

- Click the chart type icon.

**Returning visitors**



The table shows the Key Performance Indicators (KPIs) i.e. the general information on visits per page.

KPIs

Visitors	Return Visitors	Percent
1. visit	127	95.49%
2 visits	1	0.75%
3..5 visits	4	3.01%
6..9 visits	1	0.75%
10..14 visits	0	0.00%
15..19 visits	0	0.00%
20..49 visits	0	0.00%
50 and more visits	0	0.00%

Page impressions	<b>304</b>
Pageviews / Visit	<b>2</b>
Visitors	<b>152</b>
Average Duration per Visit	<b>00:02:16</b>
Bounce Visits	<b>104</b>
New Visitors	<b>133</b>

## 2.2.7 PIs to average

This page provides an overview of how the PI values compare with the average PI values. The average PI (page impressions) is calculated for the selected period and the individual values (e.g. hours or days) are compared with these. The results are expressed as percentages, with 0% representing the average. The PIs to average section graphically displays the information in a table, pie chart or ring format.

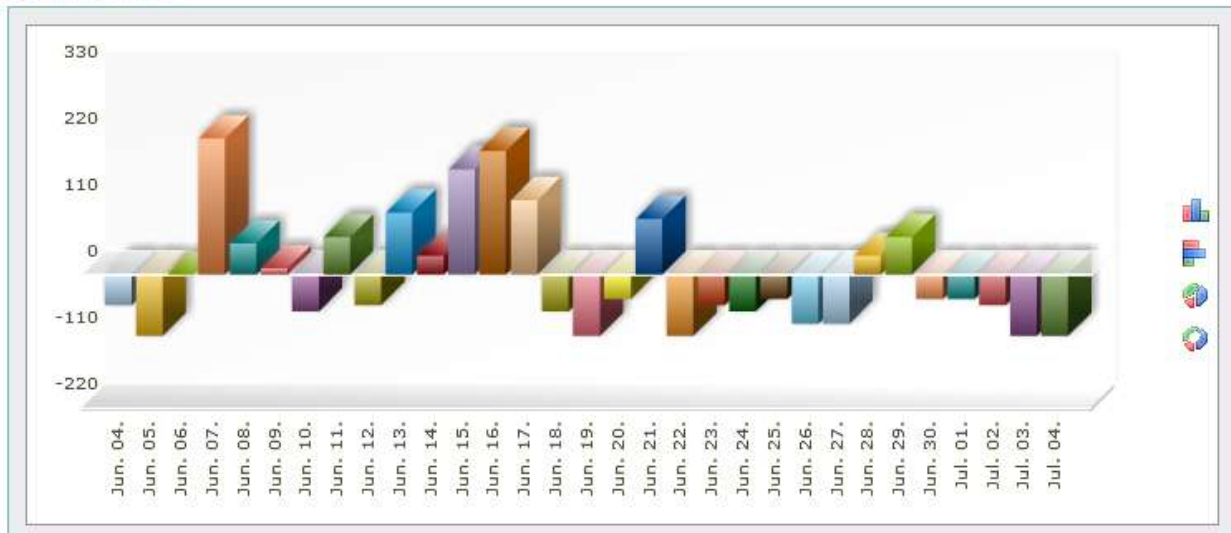
To change the date range:

- Select the start and end date from the pop-up calendar.

To change how the information is displayed:

- Click the chart type icon.

PIs to average



The table shows the Key Performance Indicators (KPIs) i.e. the general information on visits per page.

KPIs

Date	PIs	Relation
Jun. 04.	5	-50.97
Jun. 05.	0	-101.94
Jun. 06.	10	0
Jun. 07.	32	224.26
Jun. 08.	15	50.97
Jun. 09.	11	10.19
Jun. 10.	4	-61.16
Jun. 11.	16	61.16
Jun. 12.	5	-50.97

Page impressions	<b>304</b>
Pageviews / Visit	<b>2</b>
Visitors	<b>152</b>
Average Duration per Visit	<b>00:02:16</b>
Bounce Visits	<b>104</b>
New Visitors	<b>133</b>

## 2.2.8 Visits to average

This page provides an overview of how the visit values compare with the average visit values. The average of the visits is calculated for the selected period and the individual values (e.g. hours or days) are compared with these. The results are expressed as percentages, with 0% representing the average. The Visits to average section graphically displays the information in a table, pie chart or ring format.

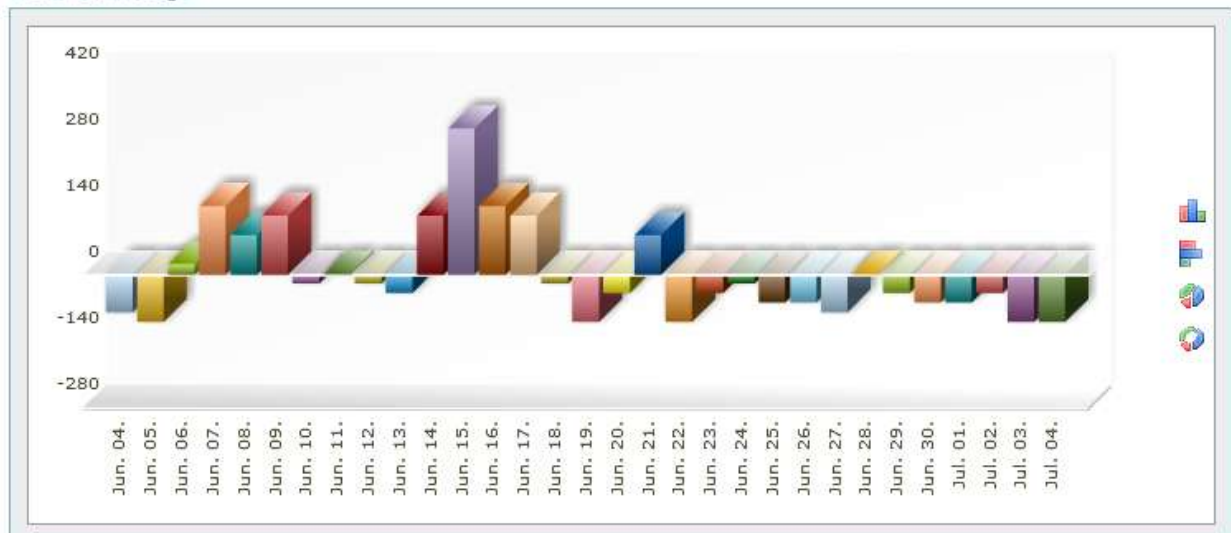
To change the date range:

- Select the start and end date from the pop-up calendar.

To change how the information is displayed:

- Click the chart type icon.

Visits to average



The table shows the Key Performance Indicators (KPIs) i.e. the general information on visits per page.

KPIs

Date	Visits	Relation
Jun. 04.	1	-79.61
Jun. 05.	0	-100
Jun. 06.	6	22.37
Jun. 07.	12	144.74
Jun. 08.	9	83.55
Jun. 09.	11	124.34
Jun. 10.	4	-18.42
Jun. 11.	5	1.97
Jun. 12.	4	-18.42

Page impressions	<b>304</b>
Pageviews / Visit	<b>2</b>
Visitors	<b>152</b>
Average Duration per Visit	<b>00:02:16</b>
Bounce Visits	<b>104</b>
New Visitors	<b>133</b>

## 2.3 Origin

The statistics for this menu item provide information about how the visitors arrived to the website and by what means.

### 2.3.1 Referrers

This page provides an overview of how many visits originated from the listed sites. The Referrers section graphically displays the information in a table, pie chart or ring format.

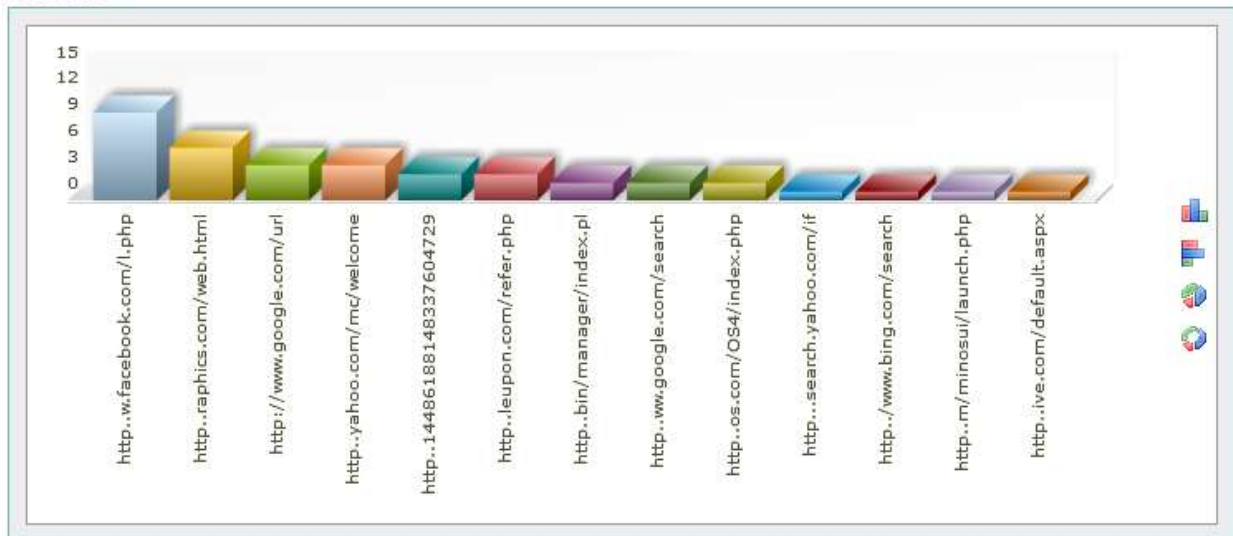
To change the date range:

- Select the start and end date from the pop-up calendar.

To change how the information is displayed:

- Click the chart type icon.

Referrers



The table shows the Key Performance Indicators (KPIs) i.e. the general information on visits per page.

KPIs

Referrer	Visits	Pls	Bounced Percent
http://www.facebook.com/l.php	10	23	5 25.00%
http://eyedesignsgraphics.com/web.html	6	6	6 15.00%
http://www.google.com/url	4	13	2 10.00%
http://us.mc1120.mail.yahoo.com/mc/welcome	4	4	4 10.00%
http://www.blogger.com/profile/14486188148337604729	3	24	0 7.50%
http://www.stumbleupon.com/refer.php	3	4	2 7.50%
http://dev.uscity.net/bin/manager/index.pl	2	6	1 5.00%
http://www.google.com/search	2	5	0 5.00%
http://energize.websiteos.com/OS4/index.php	2	5	1 5.00%

Page impressions	<b>304</b>
Pageviews / Visit	<b>2</b>
Visitors	<b>152</b>
Average Duration per Visit	<b>00:02:16</b>
Bounce Visits	<b>104</b>
New Visitors	<b>133</b>

### 2.3.2 Origin Overview

This page provides an overview about the origin of the visitors. The analysis displays whether the visit originated from direct URL input, a search engine, or a link from another website. The Origin Overview section graphically displays the information in a table, pie chart or ring format.

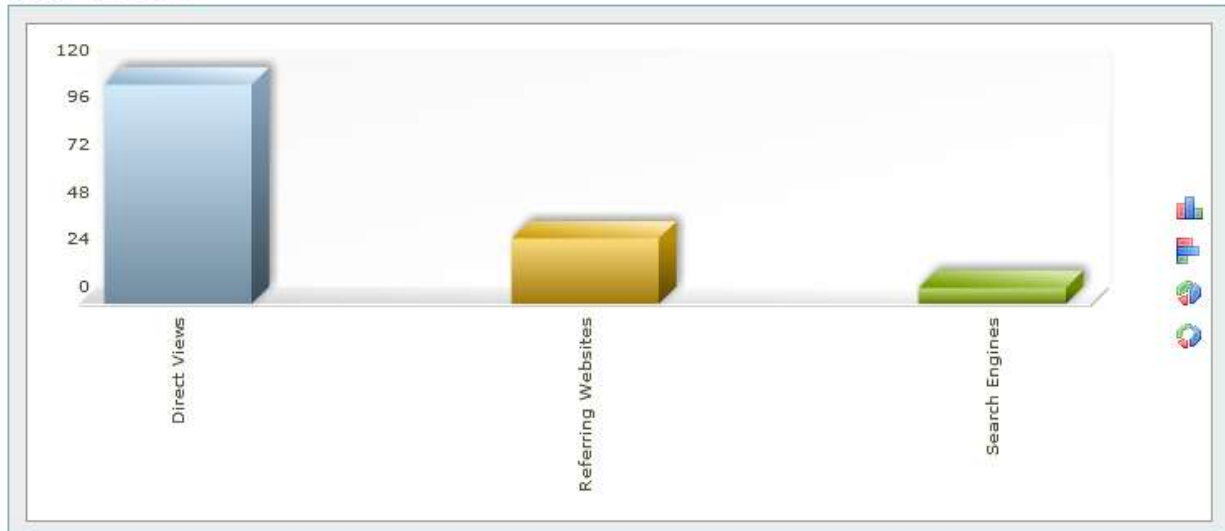
To change the date range:

- Select the start and end date from the pop-up calendar.

To change how the information is displayed:

- Click the chart type icon.

Origin Overview



The table shows the Key Performance Indicators (KPIs) i.e. the general information on visits per page.

KPIs

Origin	Visits	Bounced Percent
Direct Views	1038	1002 84.05%
Referring Websites	136	122 11.01%
Search Engines	61	55 4.94%

Page impressions	<b>1417</b>
Pageviews / Visit	<b>1.15</b>
Visitors	<b>1235</b>
Average Duration per Visit	<b>00:01:57</b>
Bounce Visits	<b>1179</b>
New Visitors	<b>294</b>

### 2.3.3 Search Engines

This page provides an overview of the search engine types the visitors used to land on the website. The Search Engines section graphically displays the information in a table, pie chart or ring format.

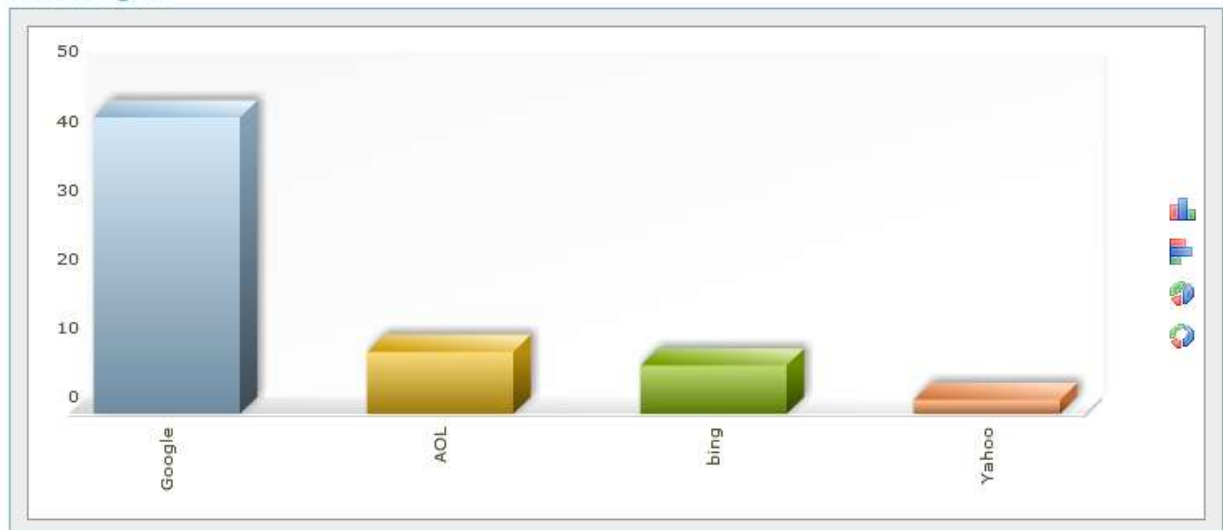
To change the date range:

- Select the start and end date from the pop-up calendar.

To change how the information is displayed:

- Click the chart type icon.

Search Engines



The table shows the Key Performance Indicators (KPIs) i.e. the general information on visits per page.



To filter search phrases:

In the Details section of the KPI table, select “all”, “extern” or “intern”.

**KPIs**

Details:  On  Off  all  extern  intern

Search Phrases	Hits	Visits	Percent
tre corsi	8	8	12.31%
tre corsi catering	8	8	12.31%
trecorsicatering.cmo	4	2	6.15%
caterer specializing in italian foods massachusetts	4	4	6.15%
tre catering	4	4	6.15%
tres corsi blog	4	4	6.15%
trecorsicatering.com	4	4	6.15%
trecorsi	3	3	4.62%
appetizers catering companies naples fl	2	1	3.08%

Page impressions	<b>1417</b>
Pageviews / Visit	<b>1.15</b>
Visitors	<b>1235</b>
Average Duration per Visit	<b>00:01:57</b>
Bounce Visits	<b>1179</b>
New Visitors	<b>294</b>

### 2.3.5 Search Words

This page provides an overview of any individual search word that visitors used to find the website. The Search Words section graphically displays the information in a table, pie chart or ring format.

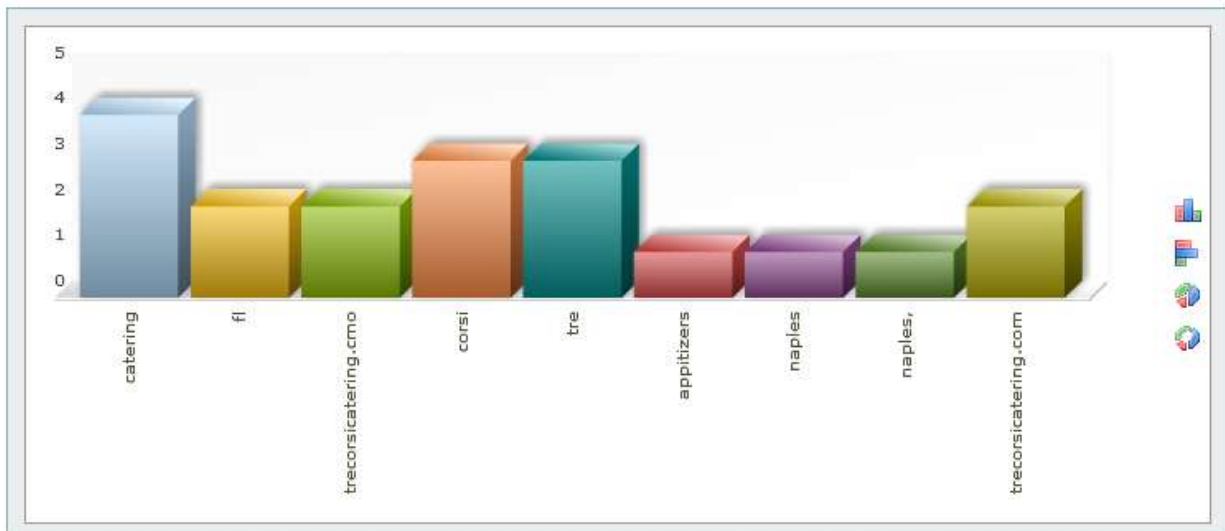
To change the date range:

- Select the start and end date from the pop-up calendar.

To change how the information is displayed:

- Click the chart type icon.

**Search Words**



The table shows the Key Performance Indicators (KPIs) i.e. the general information on visits per page.



KPIs

Search Words	Hits	Visits	Percent
catering	6	4	20.00%
fl	4	2	13.33%
trecorsicatering.cmo	4	2	13.33%
corsi	4	3	13.33%
tre	4	3	13.33%
appitizers	2	1	6.67%
naples	2	1	6.67%
naples,	2	1	6.67%
trecorsicatering.com	2	2	6.67%

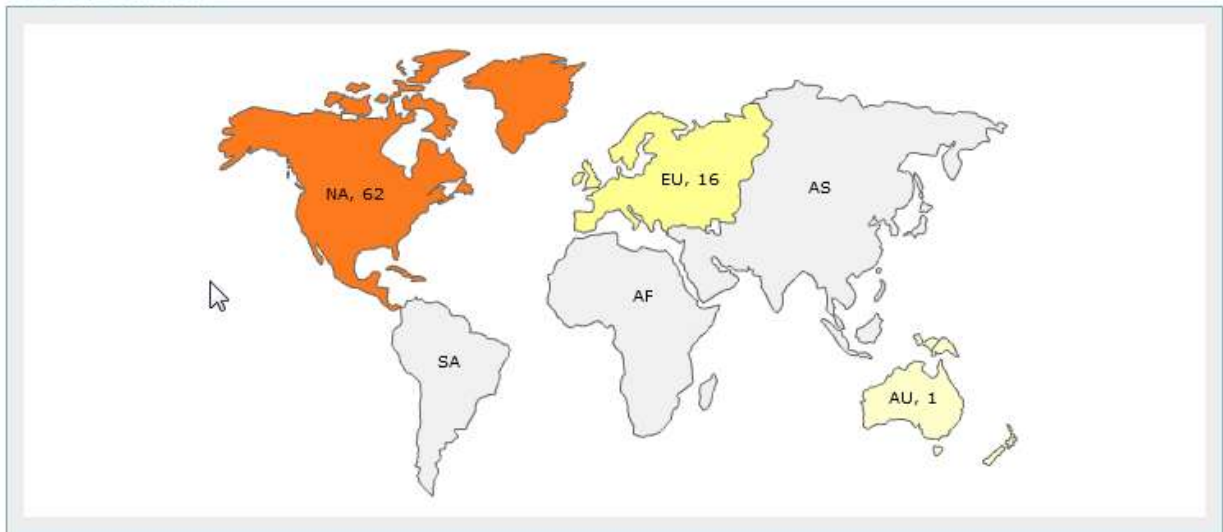
  

Page impressions	<b>330</b>
Pageviews / Visit	<b>2.04</b>
Visitors	<b>162</b>
Average Duration per Visit	<b>00:02:06</b>
Bounce Visits	<b>109</b>
New Visitors	<b>142</b>

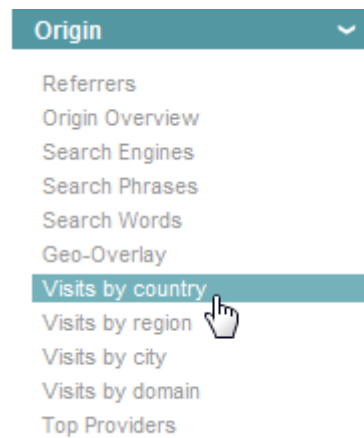
### 2.3.6 Geo-Overlay

This page provides a map overview of continents from which the visitors originate. You can zoom in to see the specific countries and further to see the specific regions and then cities of origin. Once you click on a location to zoom in, you will be directed to the Analytics page. For example, clicking on North America directs you to the Visits by country page.

Visits by Continent



**Note:** When directed to the Visits by country page using the Geo-overlay zoom feature, you will only see information specific to that continent. Also, the information is graphically displayed as a map. To view information for all continents, expand the “Origin” menu, and then click the “Visits by country” link.



The KPIs section displays general information, such as the continent name and its corresponding number of visits. This section also displays the number the total number of page impressions, pageviews per visit, the average duration per visit, the number of bounced visits and new visitors.

#### KPIs

Continents	Visits	Percent
unknown	83	51.23%
North America	62	38.27%
Europe	16	9.88%
Australia and Oceania	1	0.62%

Page impressions	<b>330</b>
Pageviews / Visit	<b>2.04</b>
Visitors	<b>162</b>
Average Duration per Visit	<b>00:02:06</b>
Bounce Visits	<b>109</b>
New Visitors	<b>142</b>

### 2.3.7 Visits by country

This page displays a graphical view of the number of visits per county. When accessing this page through left-hand navigation option, the information can be displayed in a table, pie chart or ring format.

**Note:** to display this information in the form of a map, click Geo-overlay, and zoom into the continent.

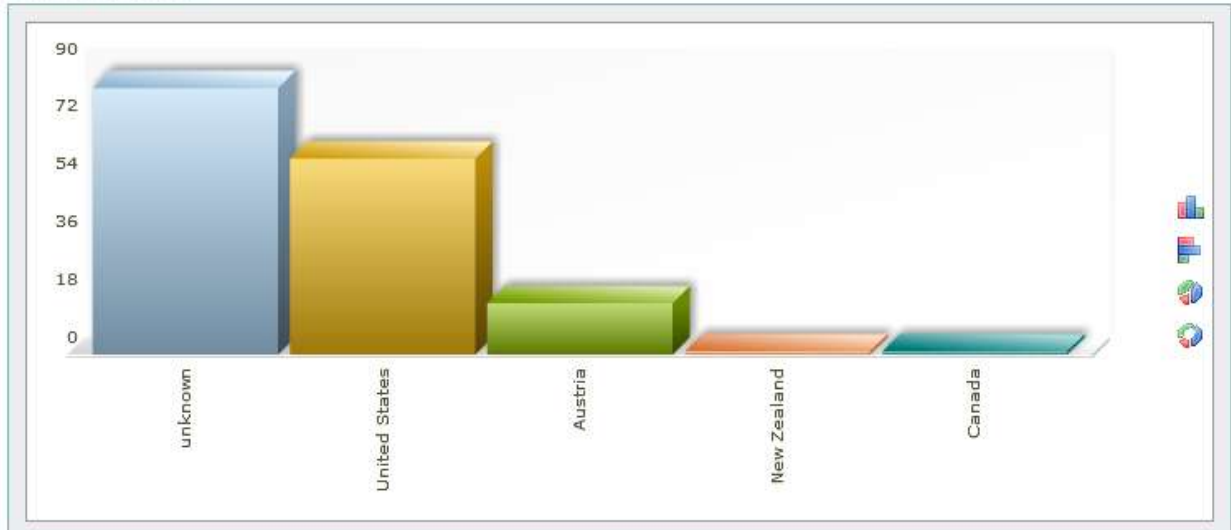
To change the date range:

- Select the start and end date from the pop-up calendar.

To change how the information is displayed:

- Click the chart type icon.

Visits by country



The KPIs section displays general information, such as the country name and its corresponding number of visits. This section also displays the number the total number of page impressions, pageviews per visit, the average duaration per visit, the number of bounced visits and new visitors.

KPIs

Country	Visits	Percent
unknown	83	51.23%
United States	61	37.65%
Austria	16	9.88%
New Zealand	1	0.62%
Canada	1	0.62%

Page impressions	<b>330</b>
Pageviews / Visit	<b>2.04</b>
Visitors	<b>162</b>
Average Duration per Visit	<b>00:02:06</b>
Bounce Visits	<b>109</b>
New Visitors	<b>142</b>

### 2.3.8 Visits by region

This page provides an overview by region of the visitor's origin. The information is presented in the form of a diagram or a table.

To change the date range:

- Select the start and end date from the pop-up calendar.

To change how the information is displayed:

- Click the chart type icon.

The table shows the Key Performance Indicators (KPIs) i.e. the general information on visits per page.

## 2.3.9 2.3.9. Visits by city

This page provides an overview of the cities from which visitors to the website hail. The information is presented in the form of a diagram or a table.

To change the date range:

- Select the start and end date from the pop-up calendar.

To change how the information is displayed:

- Click the chart type icon.

The table shows the Key Performance Indicators (KPIs) i.e. the general information on visits per page.

## 2.3.10 Visits by domain

This page provides an overview of the domains from which visitors to the website have come. The information is presented in the form of a diagram or a table.

To change the date range:

- Select the start and end date from the pop-up calendar.

To change how the information is displayed:

- Click the chart type icon.

The table shows the Key Performance Indicators (KPIs) i.e. the general information on visits per page.

## 2.3.11 Top Providers

This page provides an overview of which providers the visitors use The Top Providers section graphically displays the information in a table, pie chart or ring format.

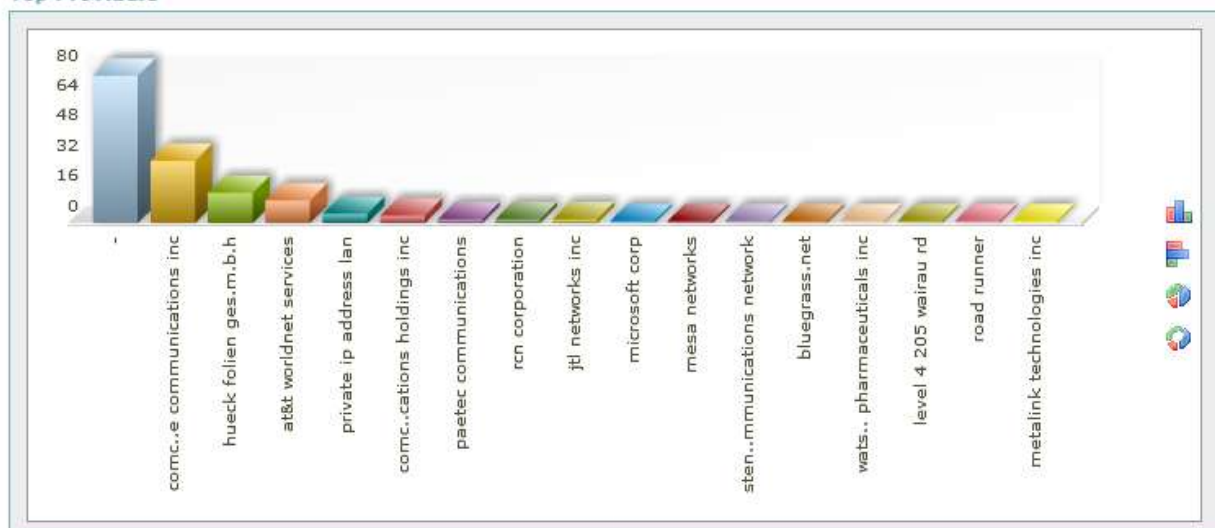
To change the date range:

- Select the start and end date from the pop-up calendar.

To change how the information is displayed:

- Click the chart type icon.

Top Providers



The KPIs section displays general information, such as the ISP name and its corresponding number of visits. This section also displays the number the total number of page impressions, pageviews per visit, the average duration per visit, the number of bounced visits and new visitors.

**KPIs**

ISPs	Visits	Percent
-	78	48.15%
comcast cable communications inc	33	20.37%
hueck folien ges.m.b.h	16	9.88%
at&t worldnet services	12	7.41%
private ip address lan	5	3.09%
comcast cable communications holdings inc	4	2.47%
paetec communications	2	1.23%
rcn corporation	2	1.23%
ntl networks inc	2	1.23%

Page impressions	<b>330</b>
Pageviews / Visit	<b>2.04</b>
Visitors	<b>162</b>
Average Duration per Visit	<b>00:02:06</b>
Bounce Visits	<b>109</b>
New Visitors	<b>142</b>

## 2.4 Technology

The statistics under this menu item provide information about the available technological equipment of visitors to the website.

### 2.4.1 Browsers

This page provides an overview of the browsers used by visitors. The Browsers section graphically displays information in table, pie or ring format.

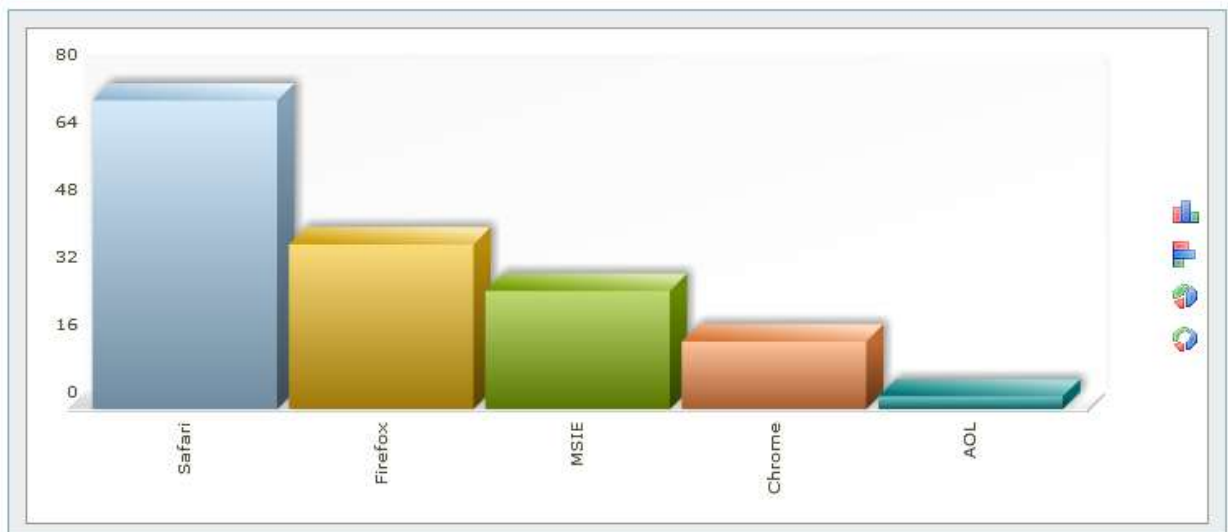
To change the date range:

- Select the start and end date from the pop-up calendar.

To change how the information is displayed:

- Click the chart type icon.

**Browsers**



The KPIs section displays general information, such as the Browser type and its corresponding number of visits. This section also displays the number the total number of page impressions, pageviews per visit, the average duaration per visit, the number of bounced visits and new visitors.

**KPIs**

Browser	Visits	Percent
Safari	73	45.91%
Firefox	39	24.53%
MSE	28	17.61%
Chrome	16	10.06%
AOL	3	1.89%
Page impressions	<b>330</b>	
Pageviews / Visit	<b>2.04</b>	
Visitors	<b>162</b>	
Average Duration per Visit	<b>00:02:06</b>	
Bounce Visits	<b>109</b>	
New Visitors	<b>142</b>	

## 2.4.2 Operating systems

This page provides an overview of the operating system visitors used. The Operating systems section graphically displays information in table, pie or ring format.

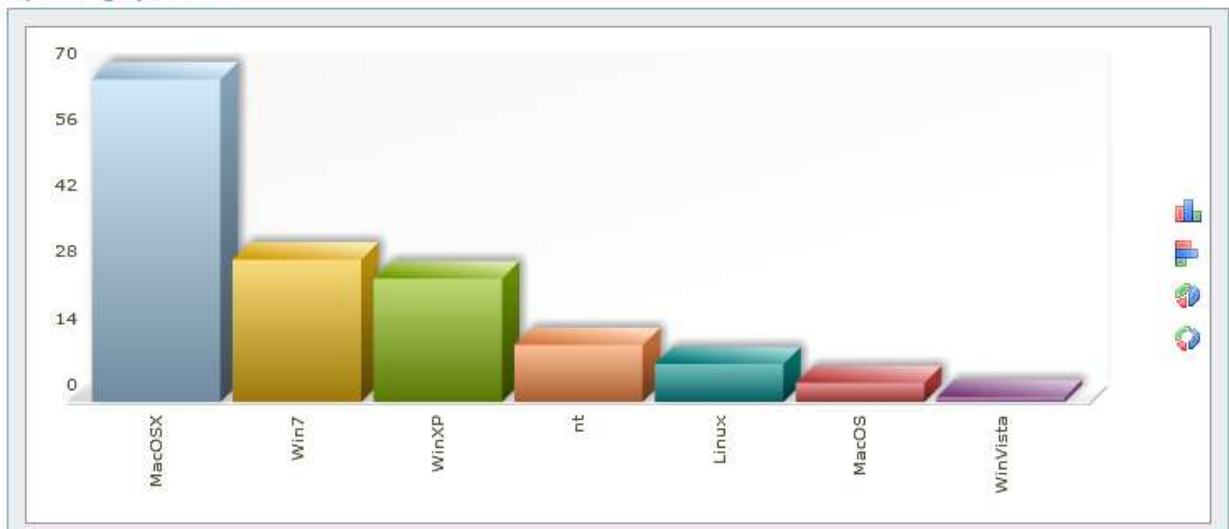
To change the date range:

- Select the start and end date from the pop-up calendar.

To change how the information is displayed:

- Click the chart type icon.

**Operating systems**



The KPIs section displays general information, such as the type operating system and its corresponding number of visits. This section also displays the number the total number of page impressions, pageviews per visit, the average duaration per visit, the number of bounced visits and new visitors.

KPIs

Operating System	Visits	Percent
MacOSX	68	45.64%
Win7	30	20.13%
WinXP	26	17.45%
nt	12	8.05%
Linux	8	5.37%
MacOS	4	2.68%
WinVista	1	0.67%
Page impressions	<b>300</b>	
Pageviews / Visit	<b>1.97</b>	
Visitors	<b>152</b>	
Average Duration per Visit	<b>00:02:22</b>	
Bounce Visits	<b>105</b>	
New Visitors	<b>132</b>	

### 2.4.3 Screen resolutions

This page provides an overview of the screen resolutions visitors used while visiting the website. The Screen resolutions section graphically displays information in table, pie or ring format.

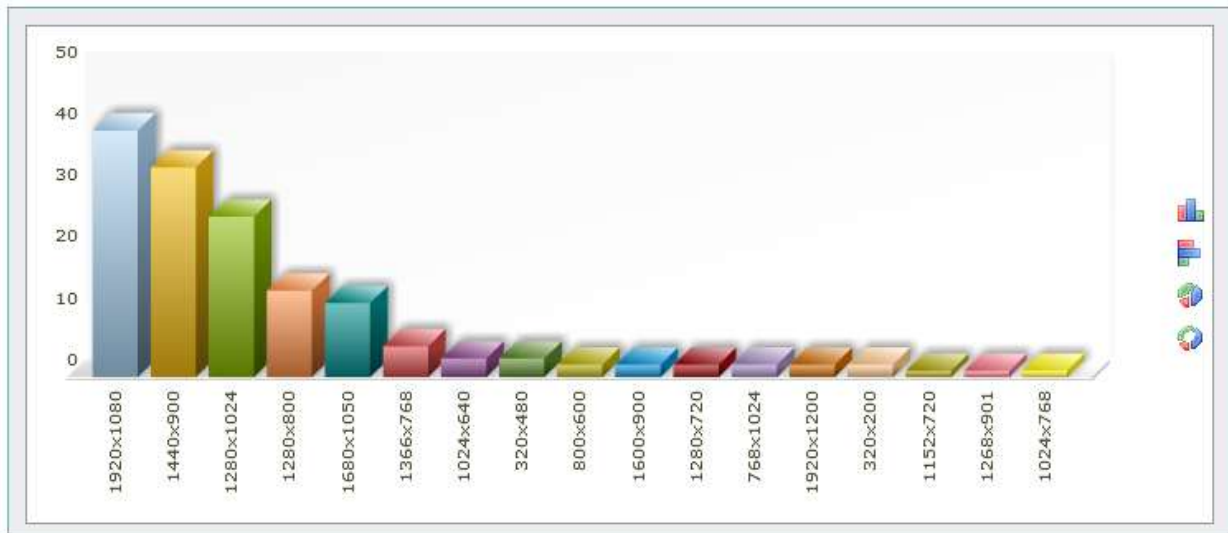
To change the date range:

- Select the start and end date from the pop-up calendar.

To change how the information is displayed:

- Click the chart type icon.

Screen resolutions



The KPIs section displays general information, such as the screen resolution settings and its corresponding number of visits. This section also displays the number the total number of page impressions, pageviews per visit, the average duaration per visit, the number of bounced visits and new visitors.

## KPIs

Screen Resolution	Visits	Percent
1920x1080	40	26.32%
1440x900	34	22.37%
1280x1024	26	17.11%
1280x800	14	9.21%
1680x1050	12	7.89%
1366x768	5	3.29%
1024x640	3	1.97%
320x480	3	1.97%
800x600	2	1.32%

Page impressions	<b>300</b>
Pageviews / Visit	<b>1.97</b>
Visitors	<b>152</b>
Average Duration per Visit	<b>00:02:22</b>
Bounce Visits	<b>105</b>
New Visitors	<b>132</b>

## 2.4.4 Connection speeds

This page provides an overview of the Internet connection used by visitors to the website. The Connection speeds section graphically displays information in table, pie or ring format.

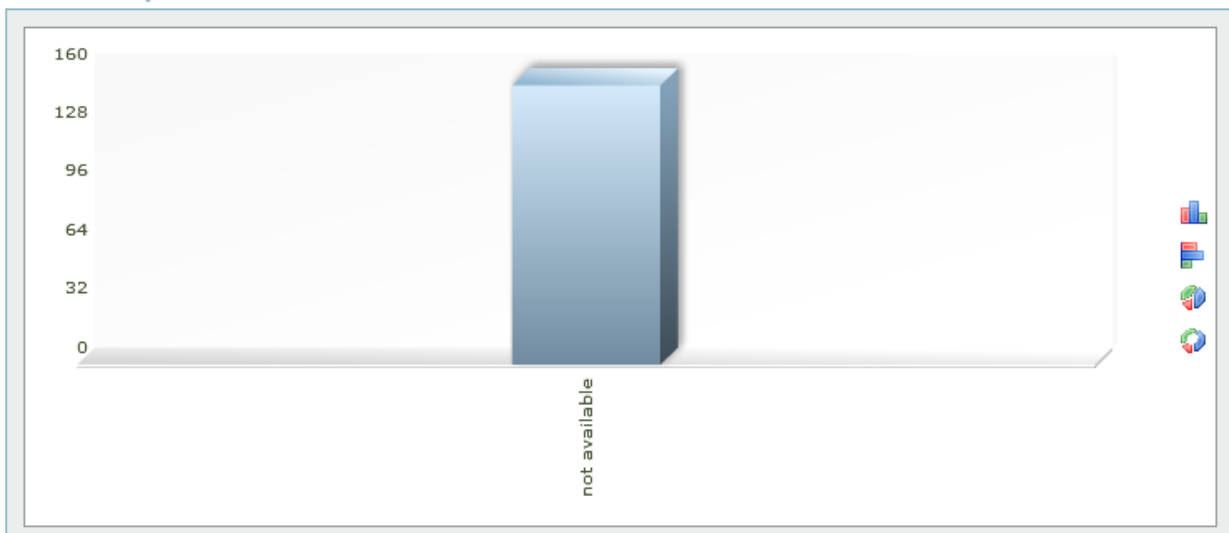
To change the date range:

- Select the start and end date from the pop-up calendar.

To change how the information is displayed:

- Click the chart type icon.

### Connection speeds



The KPIs section displays general information, such as the connection speed and its corresponding number of visits. This section also displays the number the total number of page impressions, pageviews per visit, the average duration per visit, the number of bounced visits and new visitors.



**KPIs**

Connection Speed		Visits	Percent
not available		152	100.00%

Page impressions	<b>300</b>
Pageviews / Visit	<b>1.97</b>
Visitors	<b>152</b>
Average Duration per Visit	<b>00:02:22</b>
Bounce Visits	<b>105</b>
New Visitors	<b>132</b>

## 2.4.5 Flash

This page provides an overview of whether visitors to the website have enabled Flash and, if so, what version. The Flash section graphically displays information in table, pie or ring format.

To change the date range:

- Select the start and end date from the pop-up calendar.

To change how the information is displayed:

- Click the chart type icon.

The KPIs section displays general information, such as the flash version and its corresponding number of visits. This section also displays the number the total number of page impressions, pageviews per visit, the average duration per visit, the number of bounced visits and new visitors.

## 2.4.6 JavaScript

This page provides an overview of whether visitors to the website have enabled JavaScript and, if so, which version. The JavaScript section graphically displays information in table, pie or ring format.

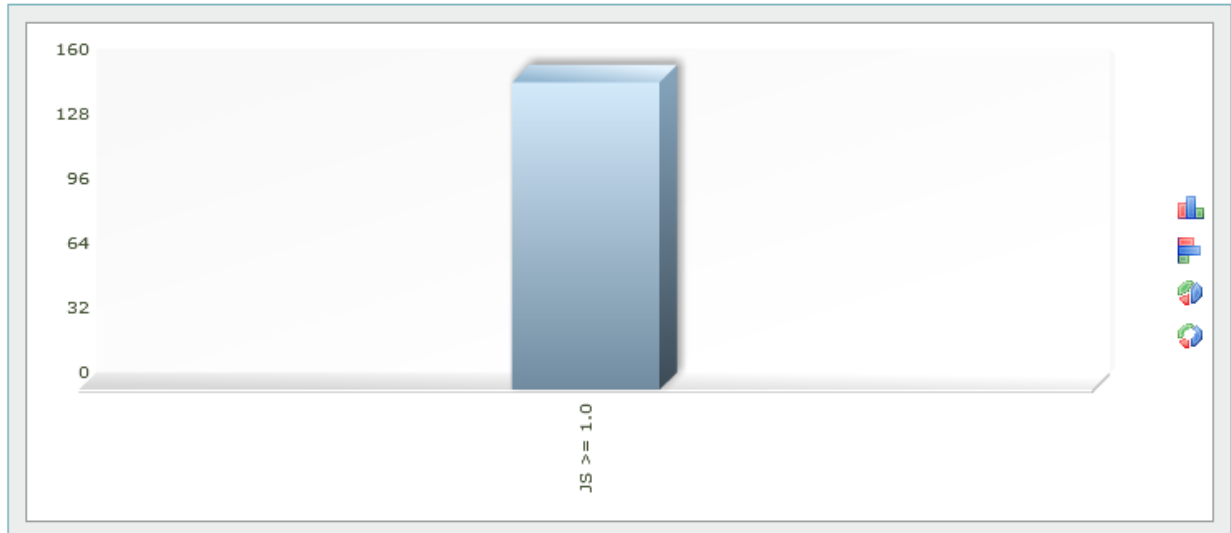
To change the date range:

- Select the start and end date from the pop-up calendar.

To change how the information is displayed:

- Click the chart type icon.

JavaScript



The KPIs section displays general information, such as the JavaScript version and its corresponding number of visits. This section also displays the number the total number of page impressions, pageviews per visit, the average duration per visit, the number of bounced visits and new visitors.

KPIs

JavaScript	Visits	Percent
JS >= 1.0	152	100.00%

Page impressions	<b>300</b>
Pageviews / Visit	<b>1.97</b>
Visitors	<b>152</b>
Average Duration per Visit	<b>00:02:22</b>
Bounce Visits	<b>105</b>
New Visitors	<b>132</b>

## 2.4.7 Plugins

This page provides an overview of which plugins the users have installed. The statistics data shows how many of the visitors have installed the displayed plugins. The Plugins section graphically displays information in table, pie or ring format.

To change the date range:

- Select the start and end date from the pop-up calendar.

To change how the information is displayed:

- Click the chart type icon.

Plugins



The KPIs section displays general information, such as the Plugin type and its corresponding number of visits. This section also displays the number the total number of page impressions, pageviews per visit, the average duration per visit, the number of bounced visits and new visitors.

KPIs

Plugins	Visits	Percent
Shockwave Flash	47	7.86%
Silverlight Plug-In	25	4.18%
Google Update	25	4.18%
Shockwave for Director	20	3.34%
QuickTime Plug-in 7.6.9	18	3.01%
Windows Live Photo Gallery	16	2.68%
QuickTime Plug-in 7.6.6	16	2.68%
iPhotoPhotocast	15	2.51%
Quartz Composer Plug-In	14	2.34%

Page impressions	<b>300</b>
Pageviews / Visit	<b>1.97</b>
Visitors	<b>152</b>
Average Duration per Visit	<b>00:02:22</b>
Bounce Visits	<b>105</b>
New Visitors	<b>132</b>

## 2.4.8 Colors/color depth

This page provides an overview of what color depth visitors have configured on their computer. The Colors/color depth section graphically displays information in table, pie or ring format.

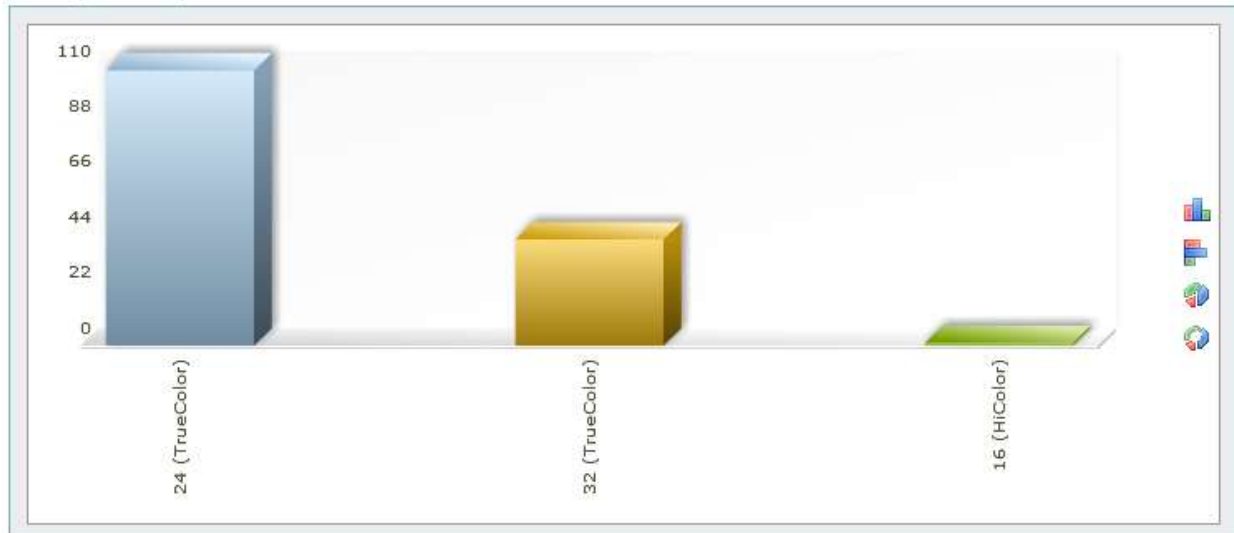
To change the date range:

- Select the start and end date from the pop-up calendar.

To change how the information is displayed:

- Click the chart type icon.

Colors/color depth



The KPIs section displays general information, such as the color type and its corresponding number of visits. This section also displays the number the total number of page impressions, pageviews per visit, the average duaration per visit, the number of bounced visits and new visitors.

KPIs

Color	Visits	Percent
24 (TrueColor)	109	71.71%
32 (TrueColor)	42	27.63%
16 (HiColor)	1	0.66%

Page impressions	<b>300</b>
Pageviews / Visit	<b>1.97</b>
Visitors	<b>152</b>
Average Duration per Visit	<b>00:02:22</b>
Bounce Visits	<b>105</b>
New Visitors	<b>132</b>

## 2.4.9 Java

This page provides an overview of whether the user has Java available when they visited the website. The Java section graphically displays information in table, pie or ring format.

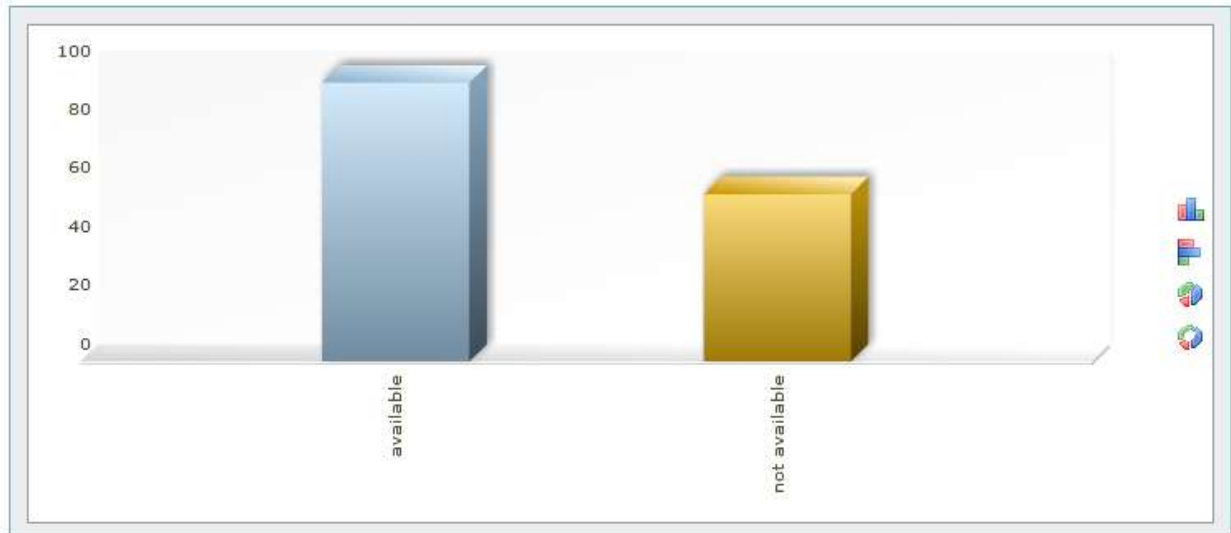
To change the date range:

- Select the start and end date from the pop-up calendar.

To change how the information is displayed:

- Click the chart type icon.

Java



The KPIs section displays general information, such as whether Java is available or not and its corresponding number of visits. This section also displays the number the total number of page impressions, pageviews per visit, the average duaration per visit, the number of bounced visits and new visitors.

KPIs

Java	Visits	Percent
available	95	62.50%
not available	57	37.50%

Page impressions	<b>300</b>
Pageviews / Visit	<b>1.97</b>
Visitors	<b>152</b>
Average Duration per Visit	<b>00:02:22</b>
Bounce Visits	<b>105</b>
New Visitors	<b>132</b>

## 2.5 Mobile

The statistics under this menu item provide information about visitors which visited the website with a mobile device.

### 2.5.1 Mobile Visitors

These statistics provide an overview of the individual mobile visitors to the website. If a visitor has visited a site three times in the selected time period, this counts as one unique visit. The unique visitors always gets differentiated per scale unit (days, weeks, etc.), only for the total value the complete period is used to differentiate the unique visitors. The analysis is displayed over time. The Mobile Visitors section graphically displays information in table, pie or ring format.

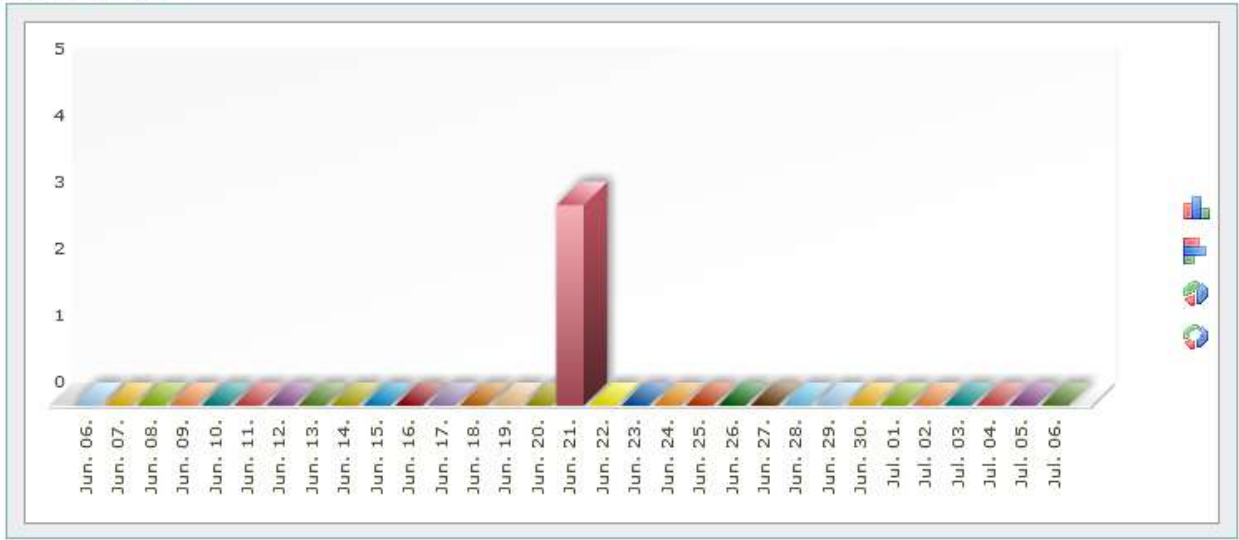
To change the date range:

- Select the start and end date from the pop-up calendar.

To change how the information is displayed:

- Click the chart type icon.

**Mobile Visitors**



The KPIs section displays general information, such as the date type and its corresponding number of visits. This section also displays the number the total number of page impressions, pageviews per visit, the average duaration per visit, the number of bounced visits and new visitors.

**KPIs**

Date	Uniaue	Visits	UV/Visitors	PIs	PIs/UV
Jun. 06.	0	0	0	0	0.00%
Jun. 07.	0	0	0	0	0.00%
Jun. 08.	0	0	0	0	0.00%
Jun. 09.	0	0	0	0	0.00%
Jun. 10.	0	0	0	0	0.00%
Jun. 11.	0	0	0	0	0.00%
Jun. 12.	0	0	0	0	0.00%
Jun. 13.	0	0	0	0	0.00%
Jun. 14.	0	0	0	0	0.00%

Page impressions	<b>300</b>
Pageviews / Visit	<b>1.97</b>
Visitors	<b>152</b>
Average Duration per Visit	<b>00:02:22</b>
Bounce Visits	<b>105</b>
New Visitors	<b>132</b>

## 2.5.2 Mobile Browser

This page provides an overview of the mobile browsers used by visitors. The Mobile Browser section graphically displays information in table, pie or ring format.

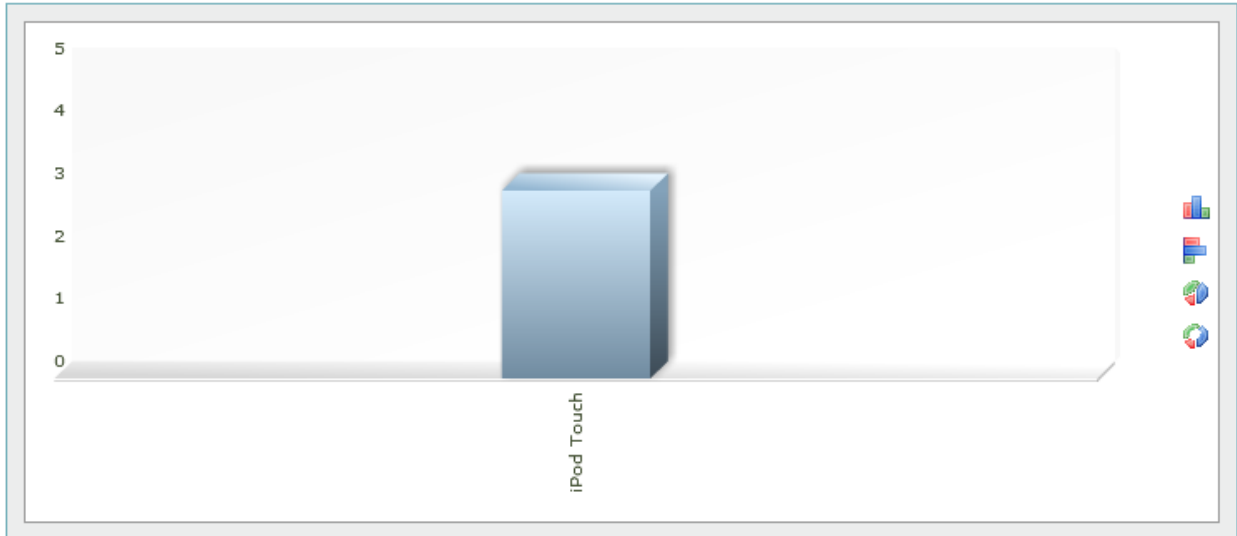
To change the date range:

- Select the start and end date from the pop-up calendar.

To change how the information is displayed:

- Click the chart type icon.

Mobile Browser



The KPIs section displays general information, such as the Browser type and its corresponding number of visits. This section also displays the number the total number of page impressions, pageviews per visit, the average duaration per visit, the number of bounced visits and new visitors.

KPIs

Browser	Visits	Percent
	3	100.00%

Page impressions	<b>300</b>
Pageviews / Visit	<b>1.97</b>
Visitors	<b>152</b>
Average Duration per Visit	<b>00:02:22</b>
Bounce Visits	<b>105</b>
New Visitors	<b>132</b>

### 2.5.3 Mobile Operating Systems

This page provides an overview of the mobile operating systems the visitors used. The Mobile Operating Systems section graphically displays information in table, pie or ring format.

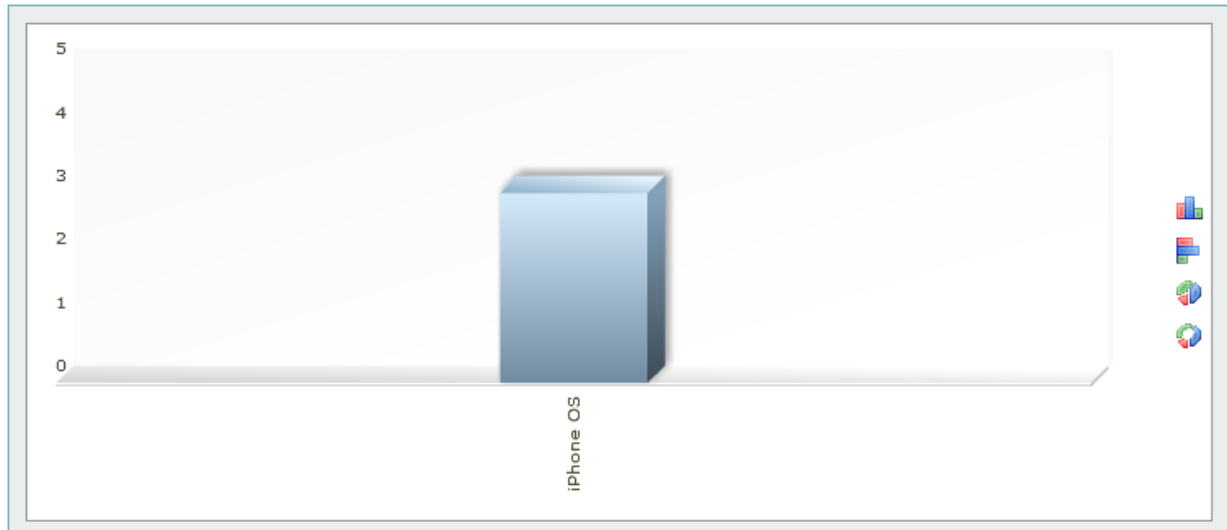
To change the date range:

- Select the start and end date from the pop-up calendar.

To change how the information is displayed:

- Click the chart type icon.

### Mobile Operating Systems



The KPIs section displays general information, such as the operating system and its corresponding number of visits. This section also displays the number the total number of page impressions, pageviews per visit, the average duration per visit, the number of bounced visits and new visitors.

### KPIs

Operating System	Visits	Percent
iPhone OS	3	100.00%

Page impressions	<b>300</b>
Pageviews / Visit	<b>1.97</b>
Visitors	<b>152</b>
Average Duration per Visit	<b>00:02:22</b>
Bounce Visits	<b>105</b>
New Visitors	<b>132</b>

## 2.5.4 Mobile Devices

This page provides an overview of the mobile devices the visitors used. The Mobile Devices section graphically displays information in table, pie or ring format.

To change the date range:

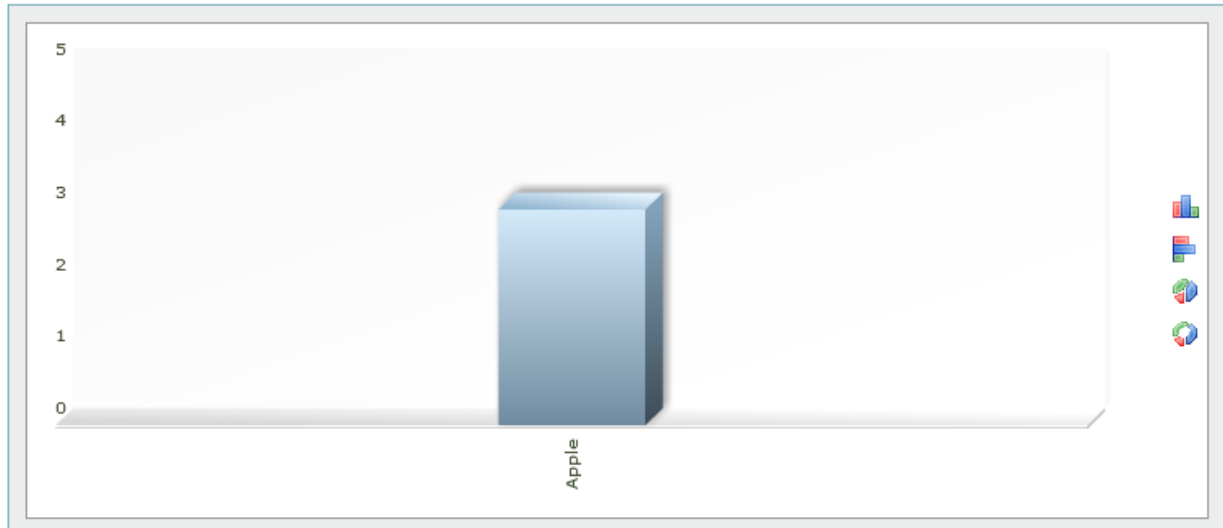
- Select the start and end date from the pop-up calendar.

To change how the information is displayed:

- Click the chart type icon.



Mobile Devices



The KPIs section displays general information, such as the dveices used and its corresponding number of visits. This section also displays the number the total number of page impressions, pageviews per visit, the average duaration per visit, the number of bounced visits and new visitors.

KPIs

Devices	Visits	Percent
Apple	3	100.00%

Page impressions	300
Pageviews / Visit	1.97
Visitors	152
Average Duration per Visit	00:02:22
Bounce Visits	105
New Visitors	132

## 2.6 E-Commerce

This section provides statistical breakdown by product, sales and orders.

### 2.6.1. Products

This page provides an overview of the **products** purchased. The information is presented in the form of a diagram or a table. They provide information on the following categories: Top Orders; Top Items (the quantity); Top sales.

To change the date range:

- Select the start and end date from the pop-up calendar.

To change how the information is displayed:

- Click the chart type icon.

The table shows the Key Performance Indicators (KPIs) i.e. the general information per page.

## 2.6.1 Sales

The statistics under this menu item provide an overview of the sales generated. The Sales section graphically displays the sales generated for the specified time frame.

### Sales



You can display the overall sales results or choose to display results by page, search terms used or payment method.

To select a specific sales option:

In the Selection section, select the option from the drop-down.

### Selection

The following sales options are available for display:

- **Overview** - This page provides an overview of the visits and the sales for the selected period. The information is presented in the form of a diagram or a table. In the diagram, the two values are shown together using bars and a line. Using both the sales and visits values together, provides information about the quantity of sales generated in relation to the amount of visits for any specific day within the selected range.
- **Sales per Landingpage** - This page provides an overview of the sales, the number of purchases and the average shopping basket value of visitors who have come from a particular entry page. The information is presented in the form of a diagram or a table.
- **Sales per Search Phrase** - This page provides an overview of the sales and the number of visits of visitors who have come to the site using a particular search phrase. The information is presented in the form of a diagram or a table.
- **Sales per Search Word** - This page provides an overview of the sales and the number of visits of visitors who have come to the site using a particular search word. The information is presented in the form of a diagram or a table.
- **Sales per payment method** - This page provides an overview of the sales and the number of visits of visitors who have used a particular payment method. The information is presented in the form of a diagram or a table.

- **Sales per region** - This page provides an overview of the sales and the number of visits of visitors who have visited the site from a particular geographical region. The information is presented in the form of a diagram or a table.

The KPIs section displays the following information for each day within the specified time frame:

- number of visits
- orders
- open orders
- cancelled orders
- number of sales
- percent of sales based on total amount sold for the specified time frame

#### KPIs

Date	Visits	Orders	Opened	Cancelled	Sales	Sales %
Jun. 06.	6	0	0	0	0.00	0.00%
Jun. 07.	12	0	0	0	0.00	0.00%
Jun. 08.	9	0	0	0	0.00	0.00%
Jun. 09.	11	0	0	0	0.00	0.00%
Jun. 10.	4	0	0	0	0.00	0.00%
Jun. 11.	5	0	0	0	0.00	0.00%
Jun. 12.	4	0	0	0	0.00	0.00%
Jun. 13.	3	0	0	0	0.00	0.00%
Jun. 14.	11	0	0	0	0.00	0.00%

Date: 0  
Visits: 0.00  
Orders: 0%

## 2.6.2 Orders

This page provides an overview of orders made within the selected time period. The information is presented in the form of a table.

To change the date range:

- Select the start and end date from the pop-up calendar.

The table shows the Key Performance Indicators (KPIs) i.e. the general information on visits per page.

For the individual orders, information such as the date, the visit duration, the sales and the related order number is displayed.

# 3 Management

The Management section allows you to manage all of the statistical data collected. This section provides information about your campaigns, including the top campaigns and top milestones. Also, this section allows you to view and generate reports.

## 3.1 Management overview

The Management Overview section provides a dashboard, which displays a graphical representation of the collected data. The dashboard also provides lists for the number of visits per referrer and number of visits per search phrase.

### 3.1.1 Dashboard

The dashboard allows the user to generate a customized overview of selected statistics. To view the analytics, you should select the date range. As well as adding and displaying up to four diagrams of individual statistics, the user can define a diagram for displaying important key figures in various diagram types.

**Dashboard**  
 (A glance overview of your web analytics)

Select a date range  
 The duration of the statistics will be displayed for:

10.06.2011 10.07.2011

**Visit Overview**

Date	Visits
Jun. 16.	18
Jun. 16.	10
Jun. 17.	9
Jun. 18.	4
Jun. 19.	1
Jun. 20.	3
Jun. 21.	8
Jun. 22.	1
Jun. 23.	3
Jun. 24.	4
Jun. 25.	2
Jun. 26.	2

**Visits per page**

Page	Visits
index.html	18
contact.html	10
gallery.html	9
about.html	4
services.html	1
menus.html	3

**Origin Overview:**

Origin	Visits
Direct Views	82
Referring Websites	21
Search Engines	5


**Referrers**

Referrer	Visits
http://www.facebook.com/ptp	6
http://eyesdesigngraphics.com/web.html	4
http://www.google.com/url	3
http://dev.akcby.net/in/manager/index.pl	2
http://www.google.be/search	2
http://www.knowbeek.net/business/07619720	2
http://uk.ni.yta.search.yahoo.com/E	1
http://www.blogger.com/profile	1
http://www.lata.com/search	1

**Search Phrases**

Search Phrases	Hits
tre consi catering	4
appliances catering companies naples fi	2
treconsicatering	1

### 3.1.1.1 Configuring the Dashboard Display

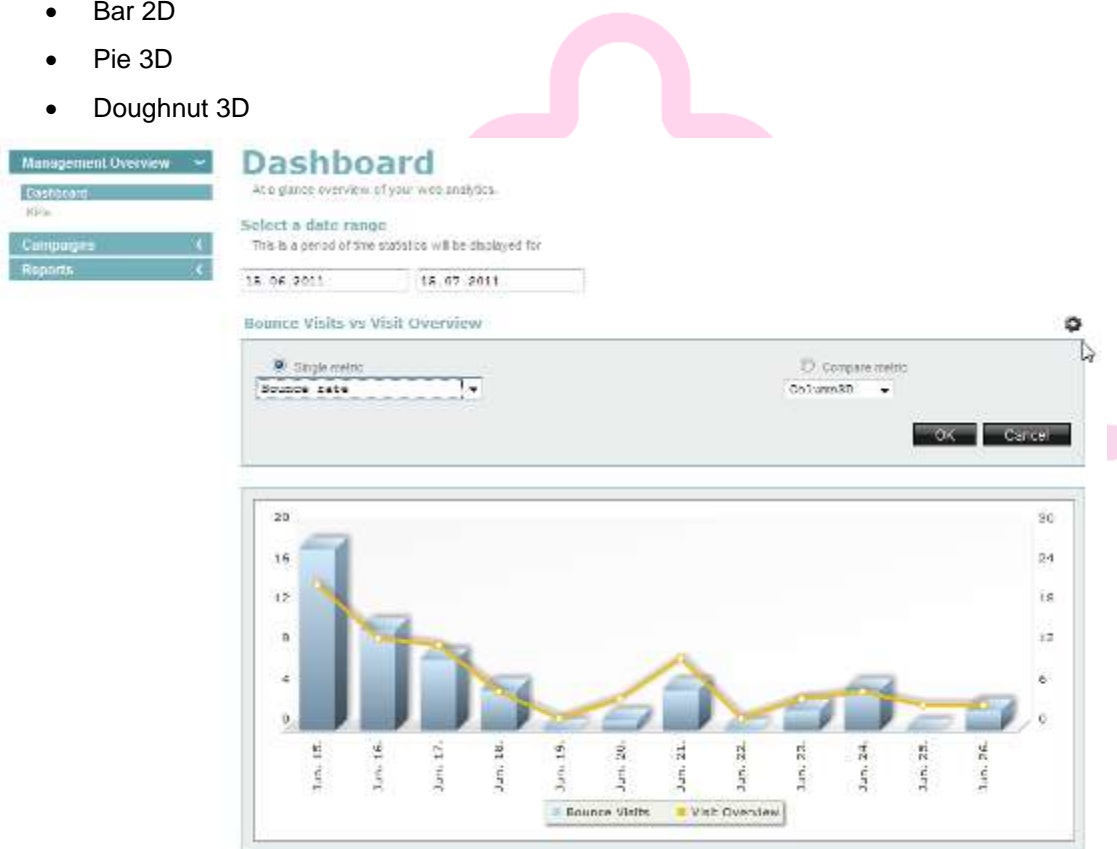
The default data view is the Visit Overview diagram; however, you can change the display view or you can display a comparative set of data. The Settings icon  is used to open the dialog. Within the Settings section, you can choose to display.

The following data options are available:

- Visit Overview
- Page Impressions
- Bounce Rate
- Returning Visitors
- Visits per page

When using a single metric view, you have the following display options:

- Column 3D
- Bar 2D
- Pie 3D
- Doughnut 3D



To change the displayed data:

1. Click the “Settings” icon.
2. If you want to display a single metric, do the following:
  - Select the “Single metric” radio button.
  - Select the data that you want to display.
  - Select the graph type for your data.
  - Click “OK”.
3. If you want to compare data, do the following:

- Select the “Compare metric” radio button.
- Select the first data set from the drop-down.
- Select the second data set from the drop-down.
- Click “OK”.

### 3.1.2 KPI's

These statistics give an overview of important KPIs (Key Performance Indicators). Using the KPIs, you can obtain important information about visitor behavior for their website. To view the statistics, select the date range.



Metric	Value
Page impressions	221
Pageviews / Visit	2.03
Visitors	109
Average Duration per Visit	00:02:05
Bounce Visits	67
New Visitors	91

## 3.2 Campaigns

The statistics under this menu item provide information about campaigns and milestones on the website.

### 3.2.1 Campaigns overview

All campaigns created are located into the folders.



Campaign profile	Campaign name	Visits	PIs	Sales	Cost	Start	End

To create a new campaign:

1. Select the folder to which the new campaign will be placed.
2. Click “New Campaign”.
3. Fill in the necessary fields.
4. Click “Save”.

To create a new folder:

1. Select the folder to which the new folder will be placed
2. Enter the new folder’s name.
3. Click “Save”.

To view the information on any campaign:

1. Select the folder in which the needed campaign is located
2. Click “Show”.

To edit the information on a campaign created:

1. Select the desired profile.
2. Click “Edit”.
3. Correct the information in the given fields.
4. Click “Save”.

## 3.2.2 Top Campaigns

This page provides an overview of the campaigns in the selected period. The information is presented in the form of a diagram or a table. To view the information, select a date range.

To change how the information is displayed:

- Click the chart type icon.

## 3.2.3 Top Milestones

This page provides an overview of the defined **milestones** and how many visitors have reached these. The information is presented in the form of a diagram or a table. To view the information, select a date range.

To change how the information is displayed:

- Click the chart type icon.

## 3.2.4 Sales per Campaign

These statistics provide an overview of the visits and the sales for the individual campaigns in the selected time period. The information is presented in the form of a diagram or a table. In the diagram, the sales and the number of visits are shown together using bars and a line, so that you can easily compare the benefit of one campaign over another. To view the information, select a date range.

To change how the information is displayed:

- Click the chart type icon.

## 3.2.5 Conversion

All conversions created are located into the folders.



To create a new campaign:

1. Select the folder to which the new conversion will be placed.
2. Click "New Conversion".
3. Fill in the necessary fields.
4. Click "Save".

To create a new folder:

1. Select the folder to which the new folder will be placed.
2. Enter the new folder's name.
3. Click "Save".

To view the information on any conversion:

1. Select the folder in which the needed conversion is located
2. Click "Show".

To edit the information on a conversion created:

1. Select the desired profile.
2. Click "Edit".
3. Correct the information in the given fields.
4. Click "Save".

## 3.3 Reports

The pages under this menu item provide an overview of already created report configurations and allow you to download the reports previously generated. The report configurations can also be created, edited and deleted here.

### 3.3.1 Report Overview

The overview page provides an overview of the report configurations and folders already created. You can also select any of the reports from the tree view.





### 3.3.2 Create new reports

This page allows you to create a new report and provides a tree-view list for all reports.


To create a new folder:

1. On the Report Overview page, select a folder in which the new folder will be located.
2. Click “New folder”.
3. In the New Folder dialog, enter the new folder’s name.
4. Click “Save”.

To create new report:

1. On the Report Overview page, select a folder to which this new report will be located.
2. Click “Create new report”.
3. Fill in the fields.
4. Click “Save”.

To delete an item:

1. Select an item.
2. Click the “Delete” icon .
3. Click “Save”.

# 4 Advanced

This page will allow you to compare two sets of statistics.

## 4.1 Statistic Comparison

This statistics under this menu item let you compare data and statistics.

### 4.1.1 Comparison

This page provides a comparison for two sets of statistics. On the one hand, they can compare the same statistic with different periods. (e.g. Visitors of a particular day with the visitors of the previous day or previous week.) On the other hand, they can compare two statistics of a different type. Thus, it is possible to compare the visitors of a region with the visitors of a country. Additionally you can compare the visits of different areas of a website.

To change how the information is displayed:

- Click the chart type icon.

The screenshot shows the 'Comparison' interface with the following elements:

- Navigation:** 'Statistic Comparison' menu and 'Compare' button.
- Section Header:** 'Comparison' with subtitle 'Compare two sets of statistics'.
- Configuration:**
  - 'Statistic 1': 'Visits by country' (15.06.2011 - 16.07.2011)
  - 'Statistic 2': 'Returning visitors' (15.06.2011 - 16.07.2011)
  - 'View mode': 'Table' (selected) and 'Chart'.
- Charts:**
  - 'Visits by country': A 3D bar chart comparing visits across five countries: Germany (~50), United States (~45), Japan (~25), New Zealand (~10), and Canada (~10).
  - 'Returning visitors': A 3D bar chart showing the distribution of returning visitors across eight categories: 1 visit (~25), 2 visits (~5), 3 visits (~5), 4-5 visits (~5), 6-8 visits (~5), 10-15 visits (~5), 20-25 visits (~5), and 30 and more visits (~5).

## 5 Support

By clicking the “Support” button, you can access support on how to use the Analytics application.



<< DOCUMENT END >>

